



SPEC[®] MPIM2007 Result

Copyright 2006-2010 Standard Performance Evaluation Corporation

IBM

SPECmpiM_peak2007 = Not Run

iDP (Intel Xeon L5420, 2.50 GHz)

SPECmpiM_base2007 = 26.4

MPI2007 license: 3440

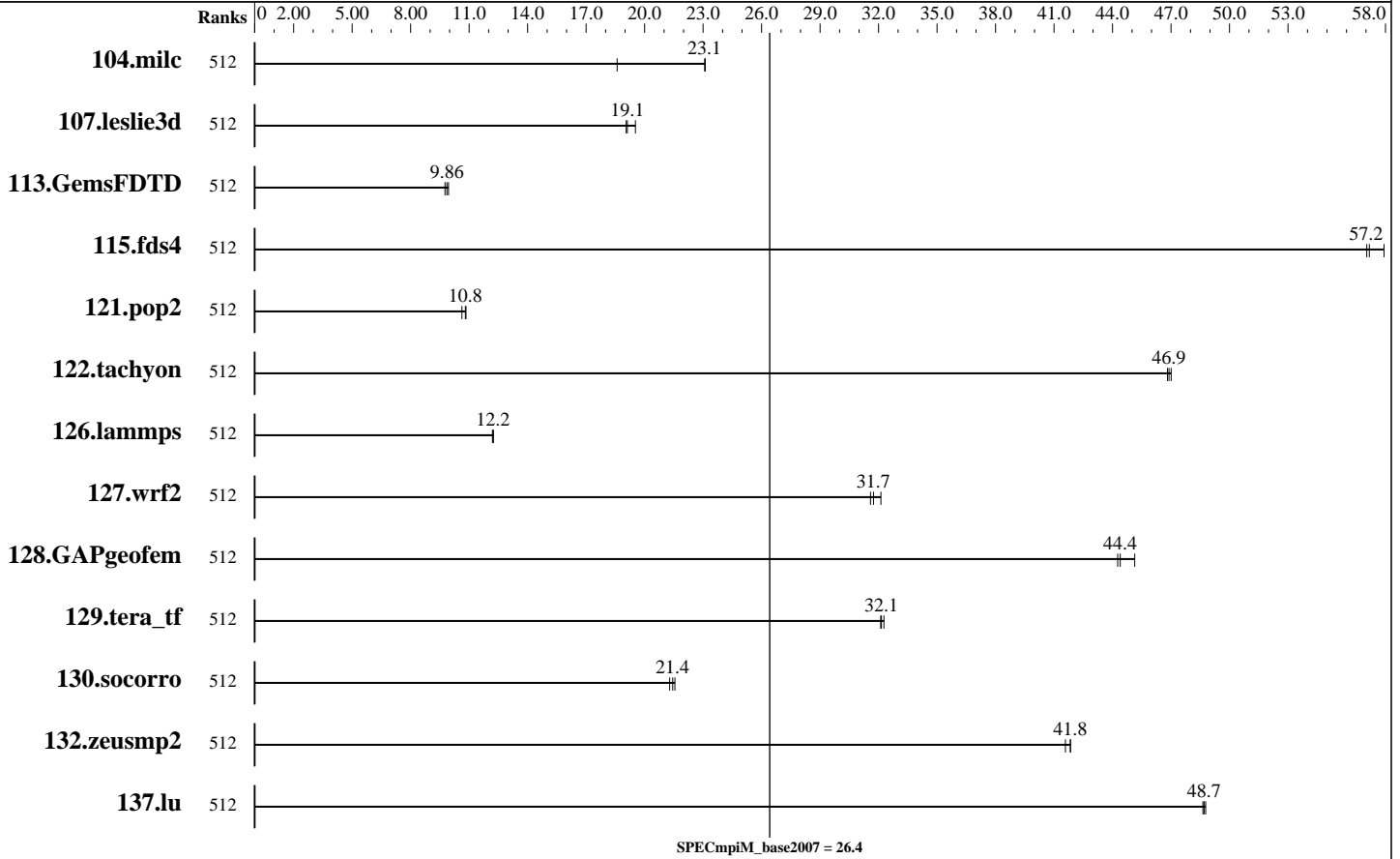
Test sponsor: Indiana University

Tested by: Scott Teige

Test date: Dec-2009

Hardware Availability: Dec-2007

Software Availability: Jan-2009



Results Table

Benchmark	Base								Peak							
	Ranks	Seconds	Ratio	Seconds	Ratio	Seconds	Ratio	Ranks	Seconds	Ratio	Seconds	Ratio	Seconds	Ratio		
104.milc	512	84.2	18.6	67.7	23.1	67.8	23.1									
107.leslie3d	512	273	19.1	267	19.5	274	19.1									
113.GemsFDTD	512	634	9.94	640	9.86	646	9.76									
115.fds4	512	34.1	57.2	33.7	57.9	34.2	57.0									
121.pop2	512	388	10.6	381	10.8	382	10.8									
122.tachyon	512	59.6	46.9	59.7	46.8	59.5	47.0									
126.lammps	512	238	12.2	239	12.2	238	12.2									
127.wrf2	512	246	31.7	243	32.1	247	31.6									
128.GAPgeofem	512	46.5	44.4	45.7	45.1	46.6	44.3									
129.tera_tf	512	86.1	32.1	85.8	32.3	86.2	32.1									

Table continues on next page. Results appear in the order in which they were run. Bold underlined text indicates a median measurement.



SPEC MPIM2007 Result

Copyright 2006-2010 Standard Performance Evaluation Corporation

IBM

SPECmpiM_peak2007 = Not Run

iDP (Intel Xeon L5420, 2.50 GHz)

SPECmpiM_base2007 = 26.4

MPI2007 license: 3440
Test sponsor: Indiana University
Tested by: Scott Teige

Test date: Dec-2009
Hardware Availability: Dec-2007
Software Availability: Jan-2009

Results Table (Continued)

Benchmark	Base							Peak						
	Ranks	Seconds	Ratio	Seconds	Ratio	Seconds	Ratio	Ranks	Seconds	Ratio	Seconds	Ratio	Seconds	Ratio
130.socorro	512	177	21.6	178	21.4	179	21.3							
132.zeusmp2	512	74.2	41.8	74.6	41.6	74.2	41.8							
137.lu	512	75.6	48.6	75.5	48.7	75.4	48.8							

Results appear in the order in which they were run. Bold underlined text indicates a median measurement.

Hardware Summary

Type of System: Homogeneous
Compute Node: iDP node
Interconnects: Gigabit Ethernet
IB Switch
Total Compute Nodes: 64
Total Chips: 128
Total Cores: 512
Total Threads: 512
Total Memory: 2 TB
Base Ranks Run: 512
Minimum Peak Ranks: --
Maximum Peak Ranks: --

Software Summary

C Compiler: Intel C++ Compiler 11.1 for Linux (11.1.038)
C++ Compiler: Intel C++ Compiler 11.1 for Linux (11.1.038)
Fortran Compiler: Intel Fortran Compiler 11.1 for Linux (11.1.038)
Base Pointers: 64-bit
Peak Pointers: 64-bit
MPI Library: OpenMPI 1.3.1
Other MPI Info: None
Pre-processors: No
Other Software: OpenMPI 1.3.1

Node Description: iDP node

Hardware

Number of nodes: 64
Uses of the node: compute
Vendor: IBM
Model: System x iDataPlex dx340
CPU Name: Intel Xeon L5420
CPU(s) orderable: 1-2 chips
Chips enabled: 2
Cores enabled: 8
Cores per chip: 4
Threads per core: 1
CPU Characteristics: 1333 MHz FSB
CPU MHz: 2500
Primary Cache: 32 KB I + 32 KB D on chip per core
Secondary Cache: 12 MB I+D on chip per chip, 6 MB shared / 2 cores
L3 Cache: None
Other Cache: None
Memory: 32 GB (FBDIMM 8x4-GB 667 MHz)
Disk Subsystem: Western Digital 160 GB SATA WD160YS-23SHBO
Other Hardware: None
Adapter: Intel Corporation 80003ES2LAN Gigabit Ethernet Controller (Copper) (rev 01)
Number of Adapters: 2
Slot Type: --
Data Rate: Gigabit Ethernet

Software

Adapter: Intel Corporation 80003ES2LAN Gigabit Ethernet Controller (Copper) (rev 01)
Adapter Driver: e1000e version 1.0.2-k2
Adapter Firmware: 2.4-0
Adapter: Mellanox Technologies MT26418 [ConnectX IB DDR, PCIe 2.0 5GT/s] (rev a0)
Adapter Driver: OFED 1.4.1
Adapter Firmware: 2.5.0
Operating System: RedHat ELv5.4 (x86_64)
2.6.18-92.1.17.el5_lustre.1.6.7.1custom-perfctr-2
Local File System: Linux/ext3
Shared File System: IBM N5500 NAS via NFSv3
System State: Multi-User
Other Software: --

Continued on next page



SPEC MPIM2007 Result

Copyright 2006-2010 Standard Performance Evaluation Corporation

IBM

SPECmpiM_peak2007 = Not Run

iDP (Intel Xeon L5420, 2.50 GHz)

SPECmpiM_base2007 = 26.4

MPI2007 license: 3440

Test sponsor: Indiana University

Tested by: Scott Teige

Test date: Dec-2009

Hardware Availability: Dec-2007

Software Availability: Jan-2009

Node Description: iDP node

Ports Used:	1
Interconnect Type:	Ethernet
Adapter:	Mellanox Technologies MT26418 [ConnectX IB DDR, PCIe 2.0 5GT/s] (rev a0)
Number of Adapters:	1
Slot Type:	PCIe x8 Gen2
Data Rate:	InfiniBand 4x DDR
Ports Used:	1
Interconnect Type:	InfiniBand

Interconnect Description: Gigabit Ethernet

	Hardware	Software
Vendor:	ProCurve Networking	
Model:	HP ProCurve Switch 5406zl Intelligent Edge J8697A	
Switch Model:	HP ProCurve Switch 5406zl Intelligent Edge J8697A	
Number of Switches:	1	
Number of Ports:	144	
Data Rate:	1Gbps Ethernet	
Firmware:	--	
Topology:	Single switch	
Primary Use:	Cluster File System	

Interconnect Description: IB Switch

	Hardware	Software
Vendor:	Cisco	
Model:	Cisco SFS 7024D	
Switch Model:	Cisco SFS 7024D	
Number of Switches:	1	
Number of Ports:	288	
Data Rate:	InfiniBand 4x DDR	
Firmware:	4.1.1.1.11	
Topology:	Single switch	
Primary Use:	MPI traffic	

Submit Notes

The config file option 'submit' was used.



SPEC MPIM2007 Result

Copyright 2006-2010 Standard Performance Evaluation Corporation

IBM

SPECmpiM_peak2007 = Not Run

iDP (Intel Xeon L5420, 2.50 GHz)

SPECmpiM_base2007 = 26.4

MPI2007 license: 3440

Test sponsor: Indiana University

Tested by: Scott Teige

Test date: Dec-2009

Hardware Availability: Dec-2007

Software Availability: Jan-2009

Base Compiler Invocation

C benchmarks:

mpicc

C++ benchmarks:

126.lammps: mpicxx

Fortran benchmarks:

mpif90

Benchmarks using both Fortran and C:

mpicc mpif90

Base Portability Flags

121.pop2: -DSPEC_MPI_CASE_FLAG

126.lammps: -DMPICH_IGNORE_CXX_SEEK

127.wrf2: -DSPEC_MPI_LINUX -DSPEC_MPI_CASE_FLAG

Base Optimization Flags

C benchmarks:

-O3 -xT -ipo -no-prec-div

C++ benchmarks:

126.lammps: -O3 -xT -ipo -no-prec-div

Fortran benchmarks:

-O3 -xT -ipo -no-prec-div

Benchmarks using both Fortran and C:

-O3 -xT -ipo -no-prec-div

The flags file that was used to format this result can be browsed at

http://www.spec.org/mpi2007/flags/EM64T_Intel101_flags.20100128.html

You can also download the XML flags source by saving the following link:

http://www.spec.org/mpi2007/flags/EM64T_Intel101_flags.20100128.xml



SPEC MPIM2007 Result

Copyright 2006-2010 Standard Performance Evaluation Corporation

IBM

SPECmpiM_peak2007 = Not Run

iDP (Intel Xeon L5420, 2.50 GHz)

SPECmpiM_base2007 = 26.4

MPI2007 license: 3440
Test sponsor: Indiana University
Tested by: Scott Teige

Test date: Dec-2009
Hardware Availability: Dec-2007
Software Availability: Jan-2009

SPEC and SPEC MPI are registered trademarks of the Standard Performance Evaluation Corporation. All other brand and product names appearing in this result are trademarks or registered trademarks of their respective holders.

For questions about this result, please contact the tester.
For other inquiries, please contact webmaster@spec.org.

Tested with SPEC MPI2007 v1.1.
Report generated on Tue Jul 22 13:39:33 2014 by SPEC MPI2007 PS/PDF formatter v1463.
Originally published on 27 January 2010.