



SPEC[®] MPIM2007 Result

Copyright 2006-2010 Standard Performance Evaluation Corporation

IBM Corporation

System x3550 M2 (Intel Xeon X5570, 2.93 GHz
SMT on, Turbo on)

SPECmpiM_peak2007 = Not Run

SPECmpiM_base2007 = 2.06

MPI2007 license: 005

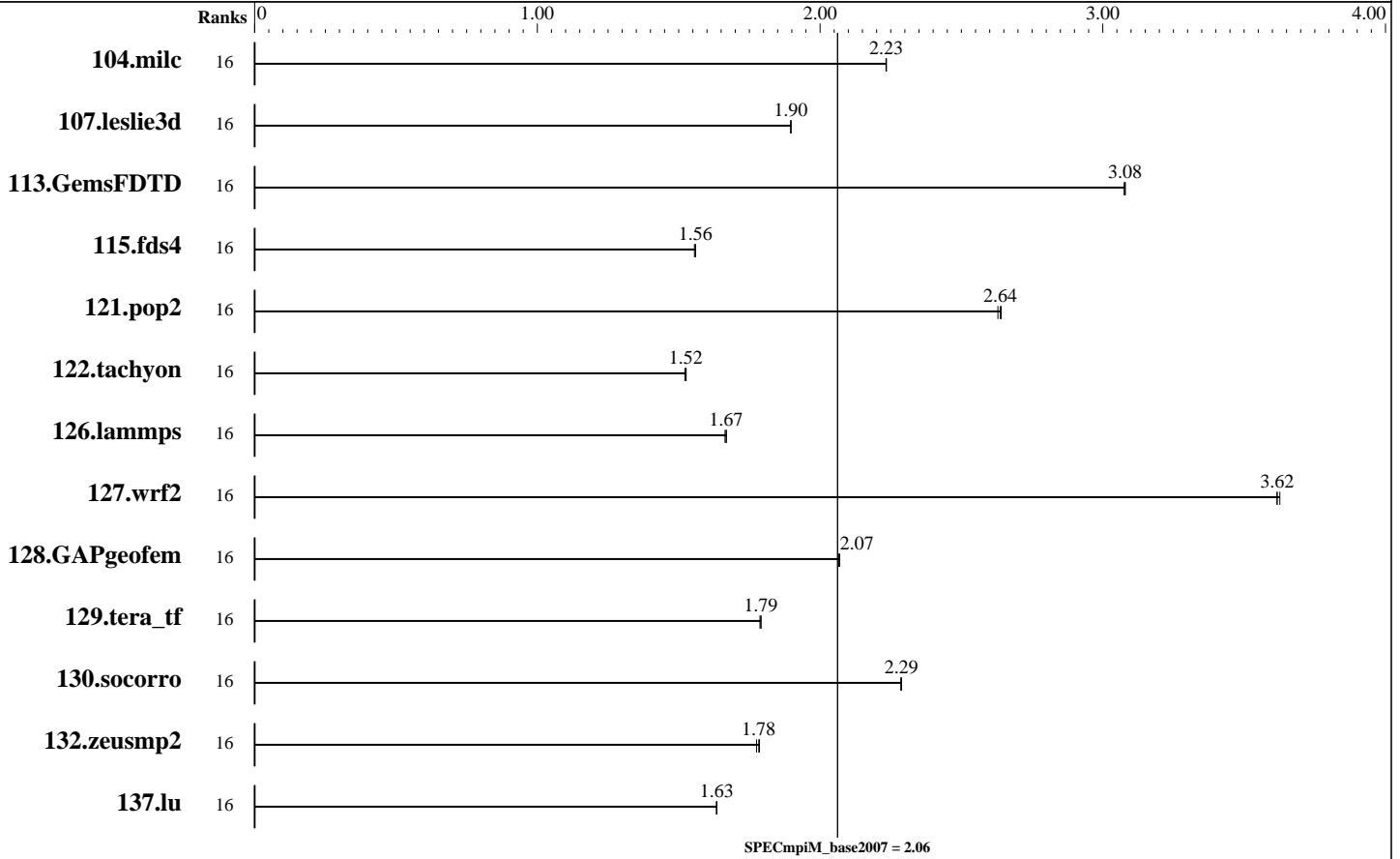
Test sponsor: IBM Corporation

Tested by: IBM Corporation

Test date: Jun-2009

Hardware Availability: Apr-2009

Software Availability: Apr-2009



Results Table

| Benchmark | Base | | | | | | | | Peak | | | | | | | |
|---------------|-------|-------------|-------------|-------------|-------------|-------------|-------------|-------|---------|-------|---------|-------|---------|-------|--|--|
| | Ranks | Seconds | Ratio | Seconds | Ratio | Seconds | Ratio | Ranks | Seconds | Ratio | Seconds | Ratio | Seconds | Ratio | | |
| 104.milc | 16 | 700 | 2.23 | 701 | 2.23 | 700 | 2.23 | | | | | | | | | |
| 107.leslie3d | 16 | 2751 | 1.90 | 2752 | 1.90 | 2752 | 1.90 | | | | | | | | | |
| 113.GemsFDTD | 16 | 2049 | 3.08 | 2048 | 3.08 | 2051 | 3.08 | | | | | | | | | |
| 115.fds4 | 16 | 1251 | 1.56 | 1254 | 1.56 | 1252 | 1.56 | | | | | | | | | |
| 121.pop2 | 16 | 1565 | 2.64 | 1570 | 2.63 | 1563 | 2.64 | | | | | | | | | |
| 122.tachyon | 16 | 1833 | 1.53 | 1834 | 1.52 | 1838 | 1.52 | | | | | | | | | |
| 126.lammps | 16 | 1748 | 1.67 | 1752 | 1.66 | 1747 | 1.67 | | | | | | | | | |
| 127.wrf2 | 16 | 2150 | 3.63 | 2156 | 3.62 | 2156 | 3.62 | | | | | | | | | |
| 128.GAPgeofem | 16 | 998 | 2.07 | 999 | 2.07 | 999 | 2.07 | | | | | | | | | |
| 129.tera_tf | 16 | 1549 | 1.79 | 1546 | 1.79 | 1546 | 1.79 | | | | | | | | | |

Table continues on next page. Results appear in the order in which they were run. Bold underlined text indicates a median measurement.



SPEC MPIM2007 Result

Copyright 2006-2010 Standard Performance Evaluation Corporation

IBM Corporation

System x3550 M2 (Intel Xeon X5570, 2.93 GHz
SMT on, Turbo on)

SPECmpiM_peak2007 = Not Run

SPECmpiM_base2007 = 2.06

MPI2007 license: 005

Test sponsor: IBM Corporation

Tested by: IBM Corporation

Test date: Jun-2009

Hardware Availability: Apr-2009

Software Availability: Apr-2009

Results Table (Continued)

| Benchmark | Base | | | | | | | Peak | | | | | | |
|-------------|-------|---------|-------|--------------------|--------------------|--------------------|--------------------|-------|---------|-------|---------|-------|---------|-------|
| | Ranks | Seconds | Ratio | Seconds | Ratio | Seconds | Ratio | Ranks | Seconds | Ratio | Seconds | Ratio | Seconds | Ratio |
| 130.socorro | 16 | 1670 | 2.29 | <u>1669</u> | <u>2.29</u> | 1668 | 2.29 | | | | | | | |
| 132.zeusmp2 | 16 | 1738 | 1.79 | 1748 | 1.78 | <u>1740</u> | <u>1.78</u> | | | | | | | |
| 137.lu | 16 | 2251 | 1.63 | 2248 | 1.63 | <u>2249</u> | <u>1.63</u> | | | | | | | |

Results appear in the order in which they were run. Bold underlined text indicates a median measurement.

Hardware Summary

Type of System: Homogeneous
 Compute Node: IBM System x3550 M2
 Interconnects: InfiniBand
 Ethernet
 File Server Node: IBM System x346 8840
 Head Node: IBM System x3550 M2
 Total Compute Nodes: 1
 Total Chips: 2
 Total Cores: 8
 Total Threads: 16
 Total Memory: 24 GB
 Base Ranks Run: 16
 Minimum Peak Ranks: --
 Maximum Peak Ranks: --

Software Summary

C Compiler: Intel C++ Compiler 11.0.083 for Linux
 C++ Compiler: Intel C++ Compiler 11.0.083 for Linux
 Fortran Compiler: Intel Fortran Compiler 11.0.083 for Linux
 Base Pointers: 64-bit
 Peak Pointers: 64-bit
 MPI Library: Intel MPI Library 3.2.1.009 for Linux
 Other MPI Info: None
 Pre-processors: No
 Other Software: Intel MPI Library 3.2.1.009 for Linux
 Multi-Purpose Daemon (MPD)

Node Description: IBM System x3550 M2

Hardware

Number of nodes: 1
 Uses of the node: compute, head
 Vendor: IBM Corporation
 Model: 7946-92U
 CPU Name: Intel Xeon X5570
 CPU(s) orderable: 1-2 chips
 Chips enabled: 2
 Cores enabled: 8
 Cores per chip: 4
 Threads per core: 2
 CPU Characteristics: Intel Turbo Boost Technology up to 3.33 GHz, 6.4 GT/s
 QPI, Hyper-Threading enabled
 CPU MHz: 2933
 Primary Cache: 32 KB I + 32 KB D on chip per core
 Secondary Cache: 256 KB I+D on chip per core
 L3 Cache: 8 MB I+D on chip per chip, 8 MB shared / 4 cores
 Other Cache: None
 Memory: 24 GB (RDIMM 6x4-GB DDR3-1333 MHz)
 Disk Subsystem: 73.4GB 10K-rpm SAS SFF Slim-HS 2.5" HDD
 Other Hardware: None
 Adapter: Integrated Broadcom Corporation NetXtreme II BCM5709 Gigabit Ethernet (rev 20)

Software

Adapter: Integrated Broadcom Corporation NetXtreme II BCM5709 Gigabit Ethernet (rev 20)
 Adapter Driver: bnx2 1.7.9-1
 Adapter Firmware: 4.6.4 NCSI 1.0.6
 Adapter: Mellanox ConnectX
 Adapter Driver: OFED 1.4-20090301-0600
 Adapter Firmware: 2.6.000
 Operating System: Red Hat EL 5.3, kernel 2.6.18-128.el5
 Local File System: Linux/ext3
 Shared File System: NFS
 System State: Multi-User
 Other Software: None

Continued on next page



SPEC MPIM2007 Result

Copyright 2006-2010 Standard Performance Evaluation Corporation

IBM Corporation

System x3550 M2 (Intel Xeon X5570, 2.93 GHz
SMT on, Turbo on)

SPECmpiM_peak2007 = Not Run

SPECmpiM_base2007 = 2.06

MPI2007 license: 005

Test sponsor: IBM Corporation

Tested by: IBM Corporation

Test date: Jun-2009

Hardware Availability: Apr-2009

Software Availability: Apr-2009

Node Description: IBM System x3550 M2

| | |
|---------------------|-------------------|
| Number of Adapters: | 1 |
| Slot Type: | PCIe x16 Gen2 |
| Data Rate: | 10/100/1000 |
| Ports Used: | 1 |
| Interconnect Type: | Ethernet |
| Adapter: | Mellanox ConnectX |
| Number of Adapters: | 1 |
| Slot Type: | PCIe x16 Gen2 |
| Data Rate: | InfiniBand 4x DDR |
| Ports Used: | 1 |
| Interconnect Type: | InfiniBand |

General Notes

BIOS settings notes:

Intel Hyper-Threading Technology (SMT): Enabled
Intel Turbo Boost Technology (Turbo) : Enabled

RAM configuration notes: Each compute node has
1x4-GB RDIMM on each memory channel.

Node Description: IBM System x346 8840

Hardware

| | |
|----------------------|--|
| Number of nodes: | 1 |
| Uses of the node: | fileserver |
| Vendor: | IBM Corporation |
| Model: | 884045Y |
| CPU Name: | Intel Xeon EM64T |
| CPU(s) orderable: | 2 chips |
| Chips enabled: | 2 |
| Cores enabled: | 2 |
| Cores per chip: | 1 |
| Threads per core: | 1 |
| CPU Characteristics: | 800 MHz FSB |
| CPU MHz: | 3600 |
| Primary Cache: | 32 KB I + 32 KB D on chip per core |
| Secondary Cache: | 1 MB I+D on chip per chip |
| L3 Cache: | None |
| Other Cache: | None |
| Memory: | 4 GB |
| Disk Subsystem: | SCSI |
| Other Hardware: | None |
| Adapter: | Integrated Broadcom Corporation NetXtreme BCM5721 Gigabit Ethernet PCI Express (rev 11) |
| Number of Adapters: | 1 |
| Slot Type: | PCI-X |
| Data Rate: | 10/100/1000 |

Software

| | |
|---------------------|--|
| Adapter: | Integrated Broadcom Corporation NetXtreme BCM5721 Gigabit Ethernet PCI Express (rev 11) |
| Adapter Driver: | tg3 3.86 |
| Adapter Firmware: | 5721-v3.29a, ASFIPMI v6.08 |
| Operating System: | Red Hat EL 5.2, kernel 2.6.18-92.el5 |
| Local File System: | None |
| Shared File System: | NFS |
| System State: | Multi-User |
| Other Software: | None |

Continued on next page



SPEC MPIM2007 Result

Copyright 2006-2010 Standard Performance Evaluation Corporation

IBM Corporation

System x3550 M2 (Intel Xeon X5570, 2.93 GHz
SMT on, Turbo on)

SPECmpiM_peak2007 = Not Run

SPECmpiM_base2007 = 2.06

MPI2007 license: 005

Test sponsor: IBM Corporation

Tested by: IBM Corporation

Test date: Jun-2009

Hardware Availability: Apr-2009

Software Availability: Apr-2009

Node Description: IBM System x346 8840

Ports Used: 1
Interconnect Type: Ethernet

Interconnect Description: InfiniBand

| Hardware | |
|---------------------|-----------------------|
| Vendor: | Voltaire |
| Model: | 24 4X DDR port Bundle |
| Switch Model: | ISR 9024D-M |
| Number of Switches: | 1 |
| Number of Ports: | 24 |
| Data Rate: | 4X DDR |
| Firmware: | 1.0.0 |
| Topology: | Single Switch |
| Primary Use: | MPI traffic |

Software

Interconnect Description: Ethernet

| Hardware | |
|---------------------|---------------------|
| Vendor: | Cisco |
| Model: | 3750G |
| Switch Model: | WS-C3750G-24TS-E1U |
| Number of Switches: | 1 |
| Number of Ports: | 28 |
| Data Rate: | Full duplex 1000 |
| Firmware: | 12.2 (35SE5) |
| Topology: | Single Switch |
| Primary Use: | File system traffic |

Software

Submit Notes

The config file option 'submit' was used.
submit = mpiexec -genv -np \$ranks \$command

Base Compiler Invocation

C benchmarks:
mpiicc

C++ benchmarks:

Continued on next page



SPEC MPIM2007 Result

Copyright 2006-2010 Standard Performance Evaluation Corporation

IBM Corporation

System x3550 M2 (Intel Xeon X5570, 2.93 GHz
SMT on, Turbo on)

SPECmpiM_peak2007 = Not Run

SPECmpiM_base2007 = 2.06

MPI2007 license: 005

Test sponsor: IBM Corporation

Tested by: IBM Corporation

Test date: Jun-2009

Hardware Availability: Apr-2009

Software Availability: Apr-2009

Base Compiler Invocation (Continued)

126.lammps: mpiicpc

Fortran benchmarks:

mpiifort

Benchmarks using both Fortran and C:

mpiicc mpiifort

Base Portability Flags

121.pop2: -DSPEC_MPI_CASE_FLAG

126.lammps: -DMPICH_IGNORE_CXX_SEEK

127.wrf2: -DSPEC_MPI_CASE_FLAG -DSPEC_MPI_LINUX

Base Optimization Flags

C benchmarks:

-O3 -xSSE4.2 -no-prec-div

C++ benchmarks:

126.lammps: -O3 -xSSE4.2 -no-prec-div

Fortran benchmarks:

-O3 -xSSE4.2 -no-prec-div

Benchmarks using both Fortran and C:

-O3 -xSSE4.2 -no-prec-div

The flags file that was used to format this result can be browsed at

http://www.spec.org/mpi2007/flags/EM64T_Intel111_flags.20090729.html

You can also download the XML flags source by saving the following link:

http://www.spec.org/mpi2007/flags/EM64T_Intel111_flags.20090729.xml



SPEC MPIM2007 Result

Copyright 2006-2010 Standard Performance Evaluation Corporation

IBM Corporation

System x3550 M2 (Intel Xeon X5570, 2.93 GHz
SMT on, Turbo on)

SPECmpiM_peak2007 = Not Run

SPECmpiM_base2007 = 2.06

MPI2007 license: 005

Test sponsor: IBM Corporation

Tested by: IBM Corporation

Test date: Jun-2009

Hardware Availability: Apr-2009

Software Availability: Apr-2009

SPEC and SPEC MPI are registered trademarks of the Standard Performance Evaluation Corporation. All other brand and product names appearing in this result are trademarks or registered trademarks of their respective holders.

For questions about this result, please contact the tester.
For other inquiries, please contact webmaster@spec.org.

Tested with SPEC MPI2007 v1.1.
Report generated on Tue Jul 22 13:38:12 2014 by SPEC MPI2007 PS/PDF formatter v1463.
Originally published on 29 July 2009.