



SPEC® CFP2006 Result

Copyright 2006-2016 Standard Performance Evaluation Corporation

Dell Inc.

SPECfp®2006 = 69.7

PowerEdge T630 (Intel Xeon E5-2609 v4, 1.70 GHz)

SPECfp_base2006 = 67.6

CPU2006 license: 55

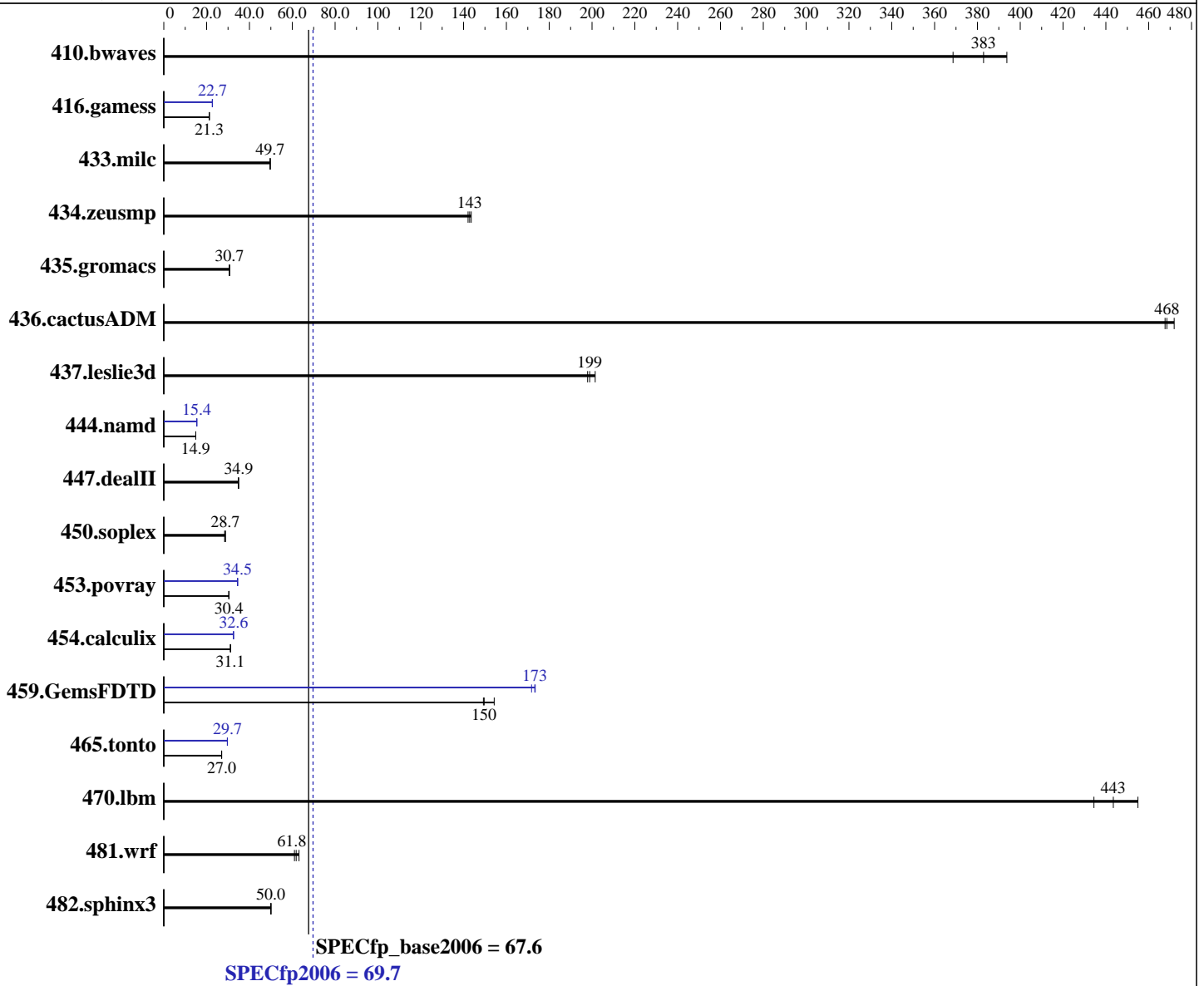
Test date: Jul-2016

Test sponsor: Dell Inc.

Hardware Availability: Jun-2016

Tested by: Dell Inc.

Software Availability: Mar-2016



SPECfp_base2006 = 67.6

SPECfp2006 = 69.7

Hardware

CPU Name: Intel Xeon E5-2609 v4
 CPU Characteristics:
 CPU MHz: 1700
 FPU: Integrated
 CPU(s) enabled: 16 cores, 2 chips, 8 cores/chip
 CPU(s) orderable: 1,2 chips
 Primary Cache: 32 KB I + 32 KB D on chip per core
 Secondary Cache: 256 KB I+D on chip per core

Continued on next page

Software

Operating System: Red Hat Enterprise Linux Server release 7.2 (Maipo)
 3.10.0-327.el7.x86_64
 Compiler: C/C++: Version 16.0.0.101 of Intel C++ Studio XE for Linux;
 Fortran: Version 16.0.0.101 of Intel Fortran Studio XE for Linux
 Auto Parallel: Yes
 File System: xfs

Continued on next page



SPEC CFP2006 Result

Copyright 2006-2016 Standard Performance Evaluation Corporation

Dell Inc.

SPECfp2006 = 69.7

PowerEdge T630 (Intel Xeon E5-2609 v4, 1.70 GHz)

SPECfp_base2006 = 67.6

CPU2006 license: 55

Test date: Jul-2016

Test sponsor: Dell Inc.

Hardware Availability: Jun-2016

Tested by: Dell Inc.

Software Availability: Mar-2016

L3 Cache: 20 MB I+D on chip per chip
Other Cache: None
Memory: 512 GB (16 x 32 GB 2Rx8 PC4-2400T-R, running at 1866 MHz)
Disk Subsystem: 1 x 200 GB SATA SSD
Other Hardware: None

System State: Run level 3 (multi-user)
Base Pointers: 64-bit
Peak Pointers: 32/64-bit
Other Software: None

Results Table

Benchmark	Base						Peak					
	Seconds	Ratio	Seconds	Ratio	Seconds	Ratio	Seconds	Ratio	Seconds	Ratio	Seconds	Ratio
410.bwaves	34.5	394	36.9	369	35.5	383	34.5	394	36.9	369	35.5	383
416.gamess	921	21.3	920	21.3	922	21.2	861	22.7	861	22.7	866	22.6
433.milc	185	49.6	185	49.7	185	49.7	185	49.6	185	49.7	185	49.7
434.zeusmp	63.7	143	63.4	144	64.0	142	63.7	143	63.4	144	64.0	142
435.gromacs	232	30.7	233	30.6	233	30.7	232	30.7	233	30.6	233	30.7
436.cactusADM	25.6	468	25.5	468	25.3	472	25.6	468	25.5	468	25.3	472
437.leslie3d	46.7	201	47.5	198	47.3	199	46.7	201	47.5	198	47.3	199
444.namd	537	14.9	537	14.9	537	14.9	520	15.4	520	15.4	520	15.4
447.dealII	328	34.9	327	35.0	329	34.8	328	34.9	327	35.0	329	34.8
450.soplex	294	28.4	290	28.8	290	28.7	294	28.4	290	28.8	290	28.7
453.povray	175	30.5	175	30.4	175	30.4	154	34.5	154	34.5	155	34.4
454.calculix	264	31.2	265	31.1	265	31.1	254	32.5	253	32.6	253	32.6
459.GemsFDTD	68.8	154	71.1	149	70.9	150	61.8	172	61.2	173	61.2	173
465.tonto	364	27.0	364	27.0	364	27.0	331	29.7	332	29.7	331	29.7
470.lbm	31.6	434	30.2	455	31.0	443	31.6	434	30.2	455	31.0	443
481.wrf	183	61.0	181	61.8	177	63.2	183	61.0	181	61.8	177	63.2
482.sphinx3	390	50.0	389	50.1	390	50.0	390	50.0	389	50.1	390	50.0

Results appear in the order in which they were run. Bold underlined text indicates a median measurement.

Operating System Notes

Stack size set to unlimited using "ulimit -s unlimited"

Platform Notes

BIOS settings:
Snoop Mode set to Opportunistic Snoop Broadcast
Virtualization Technology disabled
System Profile set to custom
CPU Performance set to Maximum Performance
C States set to Autonomous
C1E enabled
Energy Efficient Turbo disabled
Uncore Frequency set to Dynamic

Continued on next page



SPEC CFP2006 Result

Copyright 2006-2016 Standard Performance Evaluation Corporation

Dell Inc.

SPECfp2006 = 69.7

PowerEdge T630 (Intel Xeon E5-2609 v4, 1.70 GHz)

SPECfp_base2006 = 67.6

CPU2006 license: 55

Test date: Jul-2016

Test sponsor: Dell Inc.

Hardware Availability: Jun-2016

Tested by: Dell Inc.

Software Availability: Mar-2016

Platform Notes (Continued)

```

Energy Efficiency Policy set to Performance
Memory Patrol Scrub disabled
Sysinfo program /root/cpu2006-1.2/config/sysinfo.rev6914
$Rev: 6914 $ $Date:: 2014-06-25 #$ e3fbb8667b5a285932ceab81e28219e1
running on localhost.localdomain Sat Jul 23 06:20:35 2016

```

This section contains SUT (System Under Test) info as seen by some common utilities. To remove or add to this section, see: <http://www.spec.org/cpu2006/Docs/config.html#sysinfo>

```

From /proc/cpuinfo
model name      : Intel(R) Xeon(R) CPU E5-2609 v4@ 1.70GHz
 2 "physical id"s (chips)
 16 "processors"
cores, siblings (Caution: counting these is hw and system dependent. The
following excerpts from /proc/cpuinfo might not be reliable. Use with
caution.)
  cpu cores    : 8
  siblings     : 8
  physical 0: cores 0 1 2 3 4 5 6 7
  physical 1: cores 0 1 2 3 4 5 6 7
cache size     : 20480 KB

```

```

From /proc/meminfo
MemTotal:      528280412 kB
HugePages_Total: 0
Hugepagesize:  2048 kB

```

```

From /etc/*release* /etc/*version*
os-release:
NAME="Red Hat Enterprise Linux Server"
VERSION="7.2 (Maipo)"
ID="rhel"
ID_LIKE="fedora"
VERSION_ID="7.2"
PRETTY_NAME="Red Hat Enterprise Linux Server 7.2 (Maipo)"
ANSI_COLOR="0;31"
CPE_NAME="cpe:/o:redhat:enterprise_linux:7.2:GA:server"
redhat-release: Red Hat Enterprise Linux Server release 7.2 (Maipo)
system-release: Red Hat Enterprise Linux Server release 7.2 (Maipo)
system-release-cpe: cpe:/o:redhat:enterprise_linux:7.2:ga:server

```

```

uname -a:
Linux localhost.localdomain 3.10.0-327.el7.x86_64 #1 SMP Thu Oct 29 17:29:29
EDT 2015 x86_64 x86_64 x86_64 GNU/Linux

```

run-level 3 Jul 22 21:14

```

SPEC is set to: /root/cpu2006-1.2
Filesystem      Type  Size  Used Avail Use% Mounted on
/dev/sda2       xfs   140G  22G  119G  16% /

```

Additional information from dmidecode:

Continued on next page



SPEC CFP2006 Result

Copyright 2006-2016 Standard Performance Evaluation Corporation

Dell Inc.

SPECfp2006 = 69.7

PowerEdge T630 (Intel Xeon E5-2609 v4, 1.70 GHz)

SPECfp_base2006 = 67.6

CPU2006 license: 55

Test date: Jul-2016

Test sponsor: Dell Inc.

Hardware Availability: Jun-2016

Tested by: Dell Inc.

Software Availability: Mar-2016

Platform Notes (Continued)

Warning: Use caution when you interpret this section. The 'dmidecode' program reads system data which is "intended to allow hardware to be accurately determined", but the intent may not be met, as there are frequent changes to hardware, firmware, and the "DMTF SMBIOS" standard.

BIOS Dell Inc. 2.2.1 06/06/2016

Memory:

16x 00CE00B300CE M393A4K40BB1-CRC 32 GB 2 rank 2400 MHz, configured at 1866 MHz

8x Not Specified Not Specified

(End of data from sysinfo program)

General Notes

Environment variables set by runspec before the start of the run:

KMP_AFFINITY = "granularity=fine,compact,1,0"

LD_LIBRARY_PATH = "/root/cpu2006-1.2/libs/32:/root/cpu2006-1.2/libs/64:/root/cpu2006-1.2/sh"

OMP_NUM_THREADS = "16"

Binaries compiled on a system with 1x Intel Core i5-4670K CPU + 32GB memory using RedHat EL 7.1

Transparent Huge Pages enabled with:

echo always > /sys/kernel/mm/transparent_hugepage/enabled

Base Compiler Invocation

C benchmarks:

icc -m64

C++ benchmarks:

icpc -m64

Fortran benchmarks:

ifort -m64

Benchmarks using both Fortran and C:

icc -m64 ifort -m64

Base Portability Flags

410.bwaves: -DSPEC_CPU_LP64

416.gamess: -DSPEC_CPU_LP64

433.milc: -DSPEC_CPU_LP64

434.zeusmp: -DSPEC_CPU_LP64

Continued on next page

Standard Performance Evaluation Corporation

info@spec.org

http://www.spec.org/

Page 4



SPEC CFP2006 Result

Copyright 2006-2016 Standard Performance Evaluation Corporation

Dell Inc.

SPECfp2006 = 69.7

PowerEdge T630 (Intel Xeon E5-2609 v4, 1.70 GHz)

SPECfp_base2006 = 67.6

CPU2006 license: 55

Test date: Jul-2016

Test sponsor: Dell Inc.

Hardware Availability: Jun-2016

Tested by: Dell Inc.

Software Availability: Mar-2016

Base Portability Flags (Continued)

```

435.gromacs: -DSPEC_CPU_LP64 -nofor_main
436.cactusADM: -DSPEC_CPU_LP64 -nofor_main
437.leslie3d: -DSPEC_CPU_LP64
444.namd: -DSPEC_CPU_LP64
447.dealII: -DSPEC_CPU_LP64
450.soplex: -DSPEC_CPU_LP64
453.povray: -DSPEC_CPU_LP64
454.calculix: -DSPEC_CPU_LP64 -nofor_main
459.GemsFDTD: -DSPEC_CPU_LP64
465.tonto: -DSPEC_CPU_LP64
470.lbm: -DSPEC_CPU_LP64
481.wrf: -DSPEC_CPU_LP64 -DSPEC_CPU_CASE_FLAG -DSPEC_CPU_LINUX
482.sphinx3: -DSPEC_CPU_LP64

```

Base Optimization Flags

```

C benchmarks:
-xCORE-AVX2 -ipo -O3 -no-prec-div -parallel -opt-prefetch
-ansi-alias

C++ benchmarks:
-xCORE-AVX2 -ipo -O3 -no-prec-div -opt-prefetch -ansi-alias

Fortran benchmarks:
-xCORE-AVX2 -ipo -O3 -no-prec-div -parallel -opt-prefetch

Benchmarks using both Fortran and C:
-xCORE-AVX2 -ipo -O3 -no-prec-div -parallel -opt-prefetch
-ansi-alias

```

Peak Compiler Invocation

```

C benchmarks:
icc -m64

C++ benchmarks:
icpc -m64

Fortran benchmarks:
ifort -m64

Benchmarks using both Fortran and C:
icc -m64 ifort -m64

```



SPEC CFP2006 Result

Copyright 2006-2016 Standard Performance Evaluation Corporation

Dell Inc.

SPECfp2006 = 69.7

PowerEdge T630 (Intel Xeon E5-2609 v4, 1.70 GHz)

SPECfp_base2006 = 67.6

CPU2006 license: 55

Test date: Jul-2016

Test sponsor: Dell Inc.

Hardware Availability: Jun-2016

Tested by: Dell Inc.

Software Availability: Mar-2016

Peak Portability Flags

Same as Base Portability Flags

Peak Optimization Flags

C benchmarks:

433.milc: basepeak = yes

470.lbm: basepeak = yes

482.sphinx3: basepeak = yes

C++ benchmarks:

444.namd: -xCORE-AVX2(pass 2) -prof-gen:threadsafe(pass 1)
-ipo(pass 2) -O3(pass 2) -no-prec-div(pass 2)
-par-num-threads=1(pass 1) -prof-use(pass 2) -fno-alias
-auto-ilp32

447.dealII: basepeak = yes

450.soplex: basepeak = yes

453.povray: -xCORE-AVX2(pass 2) -prof-gen:threadsafe(pass 1)
-ipo(pass 2) -O3(pass 2) -no-prec-div(pass 2)
-par-num-threads=1(pass 1) -prof-use(pass 2) -unroll4
-ansi-alias

Fortran benchmarks:

410.bwaves: basepeak = yes

416.gamess: -xCORE-AVX2(pass 2) -prof-gen:threadsafe(pass 1)
-ipo(pass 2) -O3(pass 2) -no-prec-div(pass 2)
-par-num-threads=1(pass 1) -prof-use(pass 2) -unroll2
-inline-level=0 -scalar-rep-

434.zeusmp: basepeak = yes

437.leslie3d: basepeak = yes

459.GemsFDTD: -xCORE-AVX2(pass 2) -prof-gen:threadsafe(pass 1)
-ipo(pass 2) -O3(pass 2) -no-prec-div(pass 2)
-par-num-threads=1(pass 1) -prof-use(pass 2) -unroll2
-inline-level=0 -opt-prefetch -parallel

465.tonto: -xCORE-AVX2(pass 2) -prof-gen:threadsafe(pass 1)
-ipo(pass 2) -O3(pass 2) -no-prec-div(pass 2)
-par-num-threads=1(pass 1) -prof-use(pass 2) -inline-calloc

Continued on next page



SPEC CFP2006 Result

Copyright 2006-2016 Standard Performance Evaluation Corporation

Dell Inc.

SPECfp2006 = 69.7

PowerEdge T630 (Intel Xeon E5-2609 v4, 1.70 GHz)

SPECfp_base2006 = 67.6

CPU2006 license: 55

Test date: Jul-2016

Test sponsor: Dell Inc.

Hardware Availability: Jun-2016

Tested by: Dell Inc.

Software Availability: Mar-2016

Peak Optimization Flags (Continued)

465.tonto (continued):

`-opt-malloc-options=3 -auto -unroll4`

Benchmarks using both Fortran and C:

435.gromacs: basepeak = yes

436.cactusADM: basepeak = yes

454.calculix: `-xCORE-AVX2 -ipo -O3 -no-prec-div -auto-ilp32 -ansi-alias`

481.wrf: basepeak = yes

The flags files that were used to format this result can be browsed at

<http://www.spec.org/cpu2006/flags/Intel-ic16.0-official-linux64.html>

<http://www.spec.org/cpu2006/flags/Dell-Platform-Settings-V1.2-revD.20151006.html>

You can also download the XML flags sources by saving the following links:

<http://www.spec.org/cpu2006/flags/Intel-ic16.0-official-linux64.xml>

<http://www.spec.org/cpu2006/flags/Dell-Platform-Settings-V1.2-revD.20151006.xml>

SPEC and SPECfp are registered trademarks of the Standard Performance Evaluation Corporation. All other brand and product names appearing in this result are trademarks or registered trademarks of their respective holders.

For questions about this result, please contact the tester.
For other inquiries, please contact webmaster@spec.org.

Tested with SPEC CPU2006 v1.2.

Report generated on Thu Nov 10 18:51:56 2016 by SPEC CPU2006 PS/PDF formatter v6932.

Originally published on 20 September 2016.