



SPEC® CINT2006 Result

Copyright 2006-2016 Standard Performance Evaluation Corporation

Fujitsu

PRIMERGY RX2530 M2, Intel Xeon E5-2699 v4, 2.20 GHz

SPECint®2006 = 72.9

SPECint_base2006 = 71.2

CPU2006 license: 19

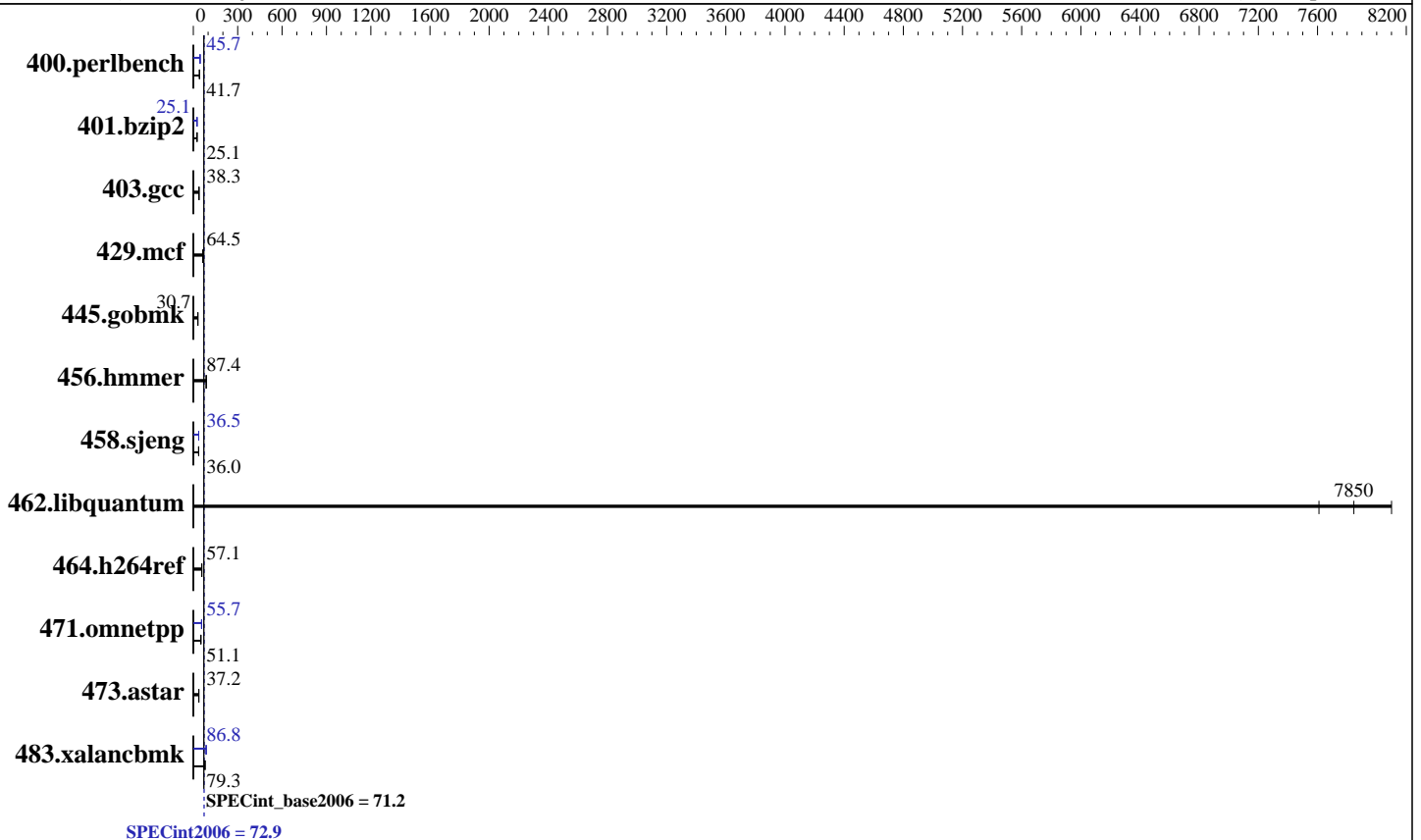
Test sponsor: Fujitsu

Tested by: Fujitsu

Test date: May-2016

Hardware Availability: Apr-2016

Software Availability: Sep-2015



Hardware

CPU Name: Intel Xeon E5-2699 v4
 CPU Characteristics: Intel Turbo Boost Technology up to 3.60 GHz
 CPU MHz: 2200
 FPU: Integrated
 CPU(s) enabled: 44 cores, 2 chips, 22 cores/chip, 2 threads/core
 CPU(s) orderable: 1,2 chip
 Primary Cache: 32 KB I + 32 KB D on chip per core
 Secondary Cache: 256 KB I+D on chip per core
 L3 Cache: 55 MB I+D on chip per chip
 Other Cache: None
 Memory: 256 GB (16 x 16 GB 2Rx4 PC4-2400T-R)
 Disk Subsystem: 1 x SATA, 1000 GB, 7200 RPM
 Other Hardware: None

Software

Operating System: SUSE Linux Enterprise Server 12 SP1 (x86_64)
 Kernel 3.12.49-11-default
 Compiler: C/C++; Version 16.0.0.101 of Intel C++ Studio XE for Linux
 Auto Parallel: Yes
 File System: xfs
 System State: Run level 3 (multi-user)
 Base Pointers: 32/64-bit
 Peak Pointers: 32/64-bit
 Other Software: Microquill SmartHeap V10.2



SPEC CINT2006 Result

Copyright 2006-2016 Standard Performance Evaluation Corporation

Fujitsu

PRIMERGY RX2530 M2, Intel Xeon E5-2699 v4, 2.20 GHz

SPECint2006 = 72.9

SPECint_base2006 = 71.2

CPU2006 license: 19
Test sponsor: Fujitsu
Tested by: Fujitsu

Test date: May-2016
Hardware Availability: Apr-2016
Software Availability: Sep-2015

Results Table

Benchmark	Base						Peak					
	Seconds	Ratio	Seconds	Ratio	Seconds	Ratio	Seconds	Ratio	Seconds	Ratio	Seconds	Ratio
400.perlbench	234	41.7	<u>235</u>	<u>41.7</u>	237	41.2	<u>214</u>	<u>45.7</u>	214	45.7	214	45.6
401.bzip2	<u>384</u>	<u>25.1</u>	385	25.1	384	25.1	384	25.1	384	25.2	<u>384</u>	<u>25.1</u>
403.gcc	210	38.4	211	38.1	<u>210</u>	<u>38.3</u>	210	38.4	211	38.1	<u>210</u>	<u>38.3</u>
429.mcf	<u>141</u>	<u>64.5</u>	140	65.1	143	63.7	<u>141</u>	<u>64.5</u>	140	65.1	143	63.7
445.gobmk	<u>341</u>	<u>30.7</u>	341	30.7	342	30.7	<u>341</u>	<u>30.7</u>	341	30.7	342	30.7
456.hammer	107	87.2	107	87.4	<u>107</u>	<u>87.4</u>	107	87.2	107	87.4	<u>107</u>	<u>87.4</u>
458.sjeng	336	36.0	336	36.0	<u>336</u>	<u>36.0</u>	332	36.5	<u>332</u>	<u>36.5</u>	332	36.5
462.libquantum	<u>2.64</u>	<u>7850</u>	2.56	8100	2.72	7610	<u>2.64</u>	<u>7850</u>	2.56	8100	2.72	7610
464.h264ref	<u>387</u>	<u>57.1</u>	386	57.3	388	57.0	<u>387</u>	<u>57.1</u>	386	57.3	388	57.0
471.omnetpp	122	51.3	123	50.7	<u>122</u>	<u>51.1</u>	112	55.6	<u>112</u>	<u>55.7</u>	111	56.5
473.astar	<u>189</u>	<u>37.2</u>	189	37.2	189	37.1	<u>189</u>	<u>37.2</u>	189	37.2	189	37.1
483.xalancbmk	88.8	77.7	<u>87.0</u>	<u>79.3</u>	86.6	79.7	79.5	86.8	79.4	86.9	<u>79.5</u>	<u>86.8</u>

Results appear in the order in which they were run. Bold underlined text indicates a median measurement.

Submit Notes

The config file option 'submit' was used.

Operating System Notes

Stack size set to unlimited using "ulimit -s unlimited"

Platform Notes

```

BIOS configuration:
Energy Performance = Performance
Utilization Profile = Unbalanced
QPI snoop mode: Home Directory Snoop with OSB
  COD Enable = Disabled, Early Snoop = Disabled, Home Snoop Dir OSB = Enabled
CPU ClE Support = Disabled
Sysinfo program /home/SPECcpu2006/config/sysinfo.rev6914
$Rev: 6914 $ $Date:: 2014-06-25 #$ e3fbb8667b5a285932ceab81e28219e1
running on RX2530M2 Mon May 23 11:10:15 2016

```

This section contains SUT (System Under Test) info as seen by some common utilities. To remove or add to this section, see: <http://www.spec.org/cpu2006/Docs/config.html#sysinfo>

```

From /proc/cpuinfo
model name : Intel(R) Xeon(R) CPU E5-2699 v4 @ 2.20GHz
 2 "physical id"s (chips)
 88 "processors"
cores, siblings (Caution: counting these is hw and system dependent. The

```

Continued on next page



SPEC CINT2006 Result

Copyright 2006-2016 Standard Performance Evaluation Corporation

Fujitsu

PRIMERGY RX2530 M2, Intel Xeon E5-2699 v4, 2.20 GHz

SPECint2006 = 72.9

SPECint_base2006 = 71.2

CPU2006 license: 19
Test sponsor: Fujitsu
Tested by: Fujitsu

Test date: May-2016
Hardware Availability: Apr-2016
Software Availability: Sep-2015

Platform Notes (Continued)

following excerpts from /proc/cpuinfo might not be reliable. Use with caution.)

```
cpu cores : 22
siblings  : 44
physical 0: cores 0 1 2 3 4 5 8 9 10 11 12 16 17 18 19 20 21 24 25 26 27
28
physical 1: cores 0 1 2 3 4 5 8 9 10 11 12 16 17 18 19 20 21 24 25 26 27
28
cache size : 56320 KB
```

```
From /proc/meminfo
MemTotal:      264511152 kB
HugePages_Total:    0
Hugepagesize:    2048 kB
```

```
/usr/bin/lsb_release -d
SUSE Linux Enterprise Server 12 SP1
```

```
From /etc/*release* /etc/*version*
SuSE-release:
SUSE Linux Enterprise Server 12 (x86_64)
VERSION = 12
PATCHLEVEL = 1
# This file is deprecated and will be removed in a future service pack or
release.
# Please check /etc/os-release for details about this release.
os-release:
NAME="SLES"
VERSION="12-SP1"
VERSION_ID="12.1"
PRETTY_NAME="SUSE Linux Enterprise Server 12 SP1"
ID="sles"
ANSI_COLOR="0;32"
CPE_NAME="cpe:/o:suse:sles:12:sp1"
```

```
uname -a:
Linux RX2530M2 3.12.49-11-default #1 SMP Wed Nov 11 20:52:43 UTC 2015
(8d714a0) x86_64 x86_64 x86_64 GNU/Linux
```

```
run-level 3 May 23 11:09 last=5
```

```
SPEC is set to: /home/SPECcpu2006
Filesystem      Type  Size  Used Avail Use% Mounted on
/dev/md126p1    xfs   391G   76G  315G  20% /home
Additional information from dmidecode:
```

Warning: Use caution when you interpret this section. The 'dmidecode' program reads system data which is "intended to allow hardware to be accurately determined", but the intent may not be met, as there are frequent changes to hardware, firmware, and the "DMTF SMBIOS" standard.

BIOS FUJITSU // American Megatrends Inc. V5.0.0.11 R1.6.0 for D3279-B1x
Continued on next page



SPEC CINT2006 Result

Copyright 2006-2016 Standard Performance Evaluation Corporation

Fujitsu

PRIMERGY RX2530 M2, Intel Xeon E5-2699 v4, 2.20 GHz

SPECint2006 = 72.9

SPECint_base2006 = 71.2

CPU2006 license: 19
Test sponsor: Fujitsu
Tested by: Fujitsu

Test date: May-2016
Hardware Availability: Apr-2016
Software Availability: Sep-2015

Platform Notes (Continued)

03/11/2016

Memory:

16x Hynix Semiconductor HMA42GR7AFR4N-UH 16 GB 2 rank 2400 MHz
8x NO DIMM NO DIMM

(End of data from sysinfo program)

General Notes

Environment variables set by runspec before the start of the run:

KMP_AFFINITY = "granularity=fine,scatter"

LD_LIBRARY_PATH = "/home/SPECcpu2006/libs/32:/home/SPECcpu2006/libs/64:/home/SPECcpu2006/sh"

OMP_NUM_THREADS = "44"

Binaries compiled on a system with 1x Intel Core i5-4670K CPU + 32GB memory using RedHat EL 7.1

Transparent Huge Pages enabled with:

echo always > /sys/kernel/mm/transparent_hugepage/enabled

For information about Fujitsu please visit: <http://www.fujitsu.com>

Base Compiler Invocation

C benchmarks:

icc -m64

C++ benchmarks:

icpc -m64

Base Portability Flags

400.perlbench: -DSPEC_CPU_LP64 -DSPEC_CPU_LINUX_X64

401.bzip2: -DSPEC_CPU_LP64

403.gcc: -DSPEC_CPU_LP64

429.mcf: -DSPEC_CPU_LP64

445.gobmk: -DSPEC_CPU_LP64

456.hmmer: -DSPEC_CPU_LP64

458.sjeng: -DSPEC_CPU_LP64

462.libquantum: -DSPEC_CPU_LP64 -DSPEC_CPU_LINUX

464.h264ref: -DSPEC_CPU_LP64

471.omnetpp: -DSPEC_CPU_LP64

473.astar: -DSPEC_CPU_LP64

483.xalanbmk: -DSPEC_CPU_LP64 -DSPEC_CPU_LINUX



SPEC CINT2006 Result

Copyright 2006-2016 Standard Performance Evaluation Corporation

Fujitsu

PRIMERGY RX2530 M2, Intel Xeon E5-2699 v4, 2.20 GHz

SPECint2006 = 72.9

SPECint_base2006 = 71.2

CPU2006 license: 19
Test sponsor: Fujitsu
Tested by: Fujitsu

Test date: May-2016
Hardware Availability: Apr-2016
Software Availability: Sep-2015

Base Optimization Flags

C benchmarks:

`-xCORE-AVX2 -ipo -O3 -no-prec-div -parallel -opt-prefetch -auto-p32`

C++ benchmarks:

`-xCORE-AVX2 -ipo -O3 -no-prec-div -opt-prefetch -auto-p32
-Wl,-z,muldefs -L/sh -lsmartheap64`

Base Other Flags

C benchmarks:

`403.gcc: -Dalloca=_alloca`

Peak Compiler Invocation

C benchmarks (except as noted below):

`icc -m64`

`400.perlbench: icc -m32 -L/opt/intel/compilers_and_libraries_2016/linux/compiler/lib/ia32_lin`

C++ benchmarks (except as noted below):

`icpc -m32 -L/opt/intel/compilers_and_libraries_2016/linux/compiler/lib/ia32_lin`

`473.astar: icpc -m64`

Peak Portability Flags

`400.perlbench: -D_FILE_OFFSET_BITS=64 -DSPEC_CPU_LINUX_IA32
401.bzip2: -DSPEC_CPU_LP64
403.gcc: -DSPEC_CPU_LP64
429.mcf: -DSPEC_CPU_LP64
445.gobmk: -DSPEC_CPU_LP64
456.hmmer: -DSPEC_CPU_LP64
458.sjeng: -DSPEC_CPU_LP64
462.libquantum: -DSPEC_CPU_LP64 -DSPEC_CPU_LINUX
464.h264ref: -DSPEC_CPU_LP64
471.omnetpp: -D_FILE_OFFSET_BITS=64
473.astar: -DSPEC_CPU_LP64
483.xalancbmk: -D_FILE_OFFSET_BITS=64 -DSPEC_CPU_LINUX`



SPEC CINT2006 Result

Copyright 2006-2016 Standard Performance Evaluation Corporation

Fujitsu

PRIMERGY RX2530 M2, Intel Xeon E5-2699 v4, 2.20 GHz

SPECint2006 = 72.9

SPECint_base2006 = 71.2

CPU2006 license: 19
Test sponsor: Fujitsu
Tested by: Fujitsu

Test date: May-2016
Hardware Availability: Apr-2016
Software Availability: Sep-2015

Peak Optimization Flags

C benchmarks:

400.perlbench: -xCORE-AVX2(pass 2) -prof-gen:threadsafe(pass 1)
-ipo(pass 2) -O3(pass 2) -no-prec-div(pass 2)
-par-num-threads=1(pass 1) -prof-use(pass 2) -opt-prefetch
-ansi-alias

401.bzip2: -xCORE-AVX2(pass 2) -prof-gen:threadsafe(pass 1)
-ipo(pass 2) -O3(pass 2) -no-prec-div
-par-num-threads=1(pass 1) -prof-use(pass 2) -auto-ilp32
-opt-prefetch -ansi-alias

403.gcc: basepeak = yes

429.mcf: basepeak = yes

445.gobmk: basepeak = yes

456.hmmer: basepeak = yes

458.sjeng: -xCORE-AVX2(pass 2) -prof-gen:threadsafe(pass 1)
-ipo(pass 2) -O3(pass 2) -no-prec-div(pass 2)
-par-num-threads=1(pass 1) -prof-use(pass 2) -unroll4

462.libquantum: basepeak = yes

464.h264ref: basepeak = yes

C++ benchmarks:

471.omnetpp: -xCORE-AVX2(pass 2) -prof-gen:threadsafe(pass 1)
-ipo(pass 2) -O3(pass 2) -no-prec-div(pass 2)
-par-num-threads=1(pass 1) -prof-use(pass 2)
-opt-ra-region-strategy=block -ansi-alias
-Wl,-z,muldefs -L/sh -lsmartheap

473.astar: basepeak = yes

483.xalancbmk: -xCORE-AVX2 -ipo -O3 -no-prec-div -opt-prefetch
-ansi-alias -Wl,-z,muldefs -L/sh -lsmartheap

Peak Other Flags

C benchmarks:

403.gcc: -Dalloca=_alloca



SPEC CINT2006 Result

Copyright 2006-2016 Standard Performance Evaluation Corporation

Fujitsu

PRIMERGY RX2530 M2, Intel Xeon E5-2699 v4, 2.20 GHz

SPECint2006 = 72.9

SPECint_base2006 = 71.2

CPU2006 license: 19

Test sponsor: Fujitsu

Tested by: Fujitsu

Test date: May-2016

Hardware Availability: Apr-2016

Software Availability: Sep-2015

The flags files that were used to format this result can be browsed at

<http://www.spec.org/cpu2006/flags/Intel-ic16.0-official-linux64.html>

<http://www.spec.org/cpu2006/flags/Fujitsu-Platform-Settings-V1.2-BDW-RevB.html>

You can also download the XML flags sources by saving the following links:

<http://www.spec.org/cpu2006/flags/Intel-ic16.0-official-linux64.xml>

<http://www.spec.org/cpu2006/flags/Fujitsu-Platform-Settings-V1.2-BDW-RevB.xml>

SPEC and SPECint are registered trademarks of the Standard Performance Evaluation Corporation. All other brand and product names appearing in this result are trademarks or registered trademarks of their respective holders.

For questions about this result, please contact the tester.
For other inquiries, please contact webmaster@spec.org.

Tested with SPEC CPU2006 v1.2.
Report generated on Tue Jun 28 17:33:34 2016 by SPEC CPU2006 PS/PDF formatter v6932.
Originally published on 28 June 2016.