



SPEC® CINT2006 Result

Copyright 2006-2016 Standard Performance Evaluation Corporation

Dell Inc.

SPECint®2006 = 62.4

PowerEdge FC830 (Intel Xeon E5-4669 v4, 2.20 GHz)

SPECint_base2006 = 60.8

CPU2006 license: 55

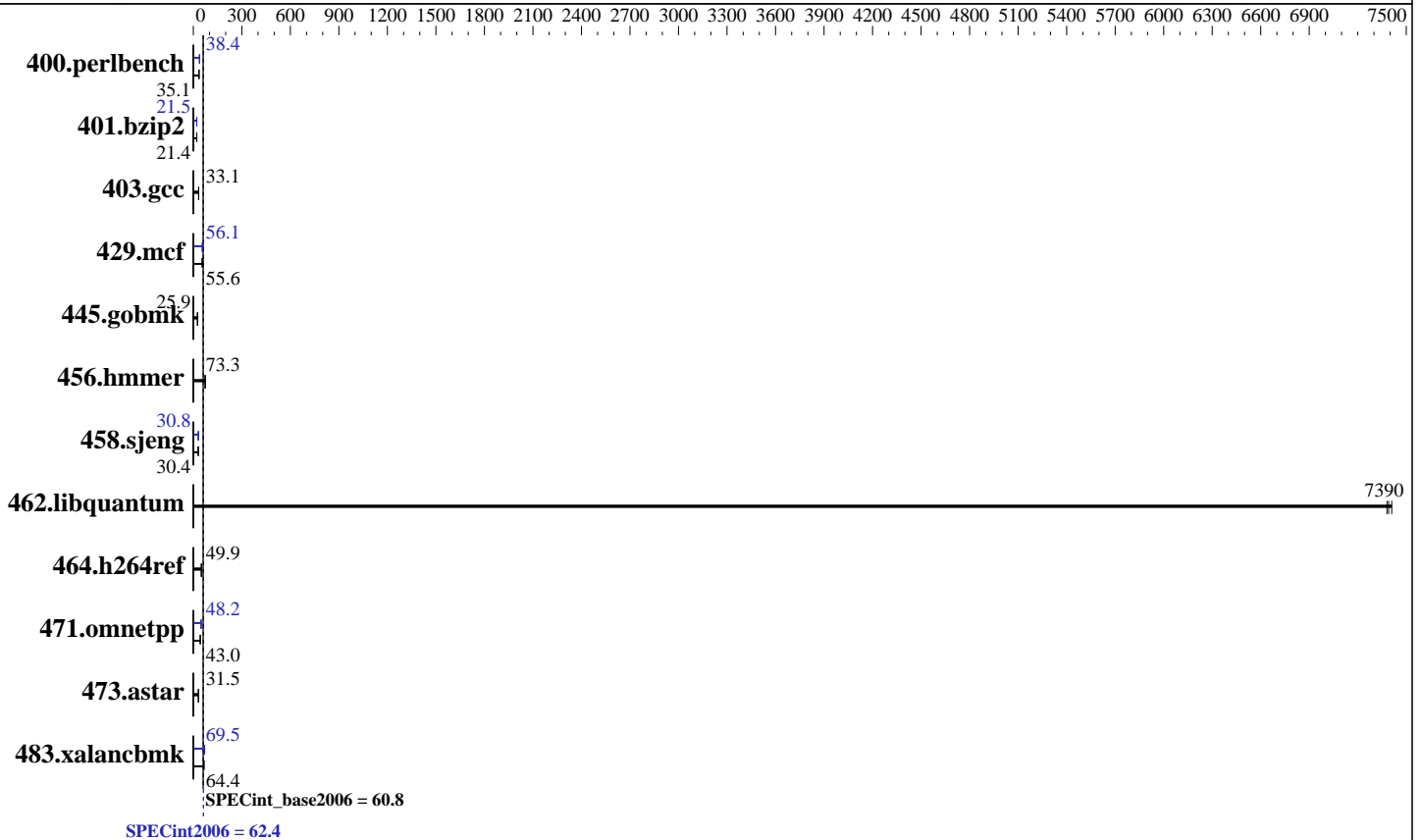
Test date: Apr-2016

Test sponsor: Dell Inc.

Hardware Availability: Jun-2016

Tested by: Dell Inc.

Software Availability: Mar-2016



Hardware

CPU Name: Intel Xeon E5-4669 v4
 CPU Characteristics: Intel Turbo Boost Technology up to 3.00 GHz
 CPU MHz: 2200
 FPU: Integrated
 CPU(s) enabled: 88 cores, 4 chips, 22 cores/chip, 2 threads/core
 CPU(s) orderable: 2,4 chip
 Primary Cache: 32 KB I + 32 KB D on chip per core
 Secondary Cache: 256 KB I+D on chip per core
 L3 Cache: 55 MB I+D on chip per chip
 Other Cache: None
 Memory: 512 GB (32 x 16 GB 2Rx8 PC4-2400T-R)
 Disk Subsystem: 1 x 800 GB SATA SSD
 Other Hardware: None

Software

Operating System: SUSE Linux Enterprise Server 12 SP1 3.12.49-11-default
 Compiler: C/C++: Version 16.0.0.101 of Intel C++ Studio XE for Linux
 Auto Parallel: Yes
 File System: btrfs
 System State: Run level 3 (multi-user)
 Base Pointers: 32/64-bit
 Peak Pointers: 32/64-bit
 Other Software: Microquill SmartHeap V10.2



SPEC CINT2006 Result

Copyright 2006-2016 Standard Performance Evaluation Corporation

Dell Inc.

SPECint2006 = 62.4

PowerEdge FC830 (Intel Xeon E5-4669 v4, 2.20 GHz)

SPECint_base2006 = 60.8

CPU2006 license: 55
Test sponsor: Dell Inc.
Tested by: Dell Inc.

Test date: Apr-2016
Hardware Availability: Jun-2016
Software Availability: Mar-2016

Results Table

Benchmark	Base						Peak					
	Seconds	Ratio	Seconds	Ratio	Seconds	Ratio	Seconds	Ratio	Seconds	Ratio	Seconds	Ratio
400.perlbench	278	35.1	280	34.9	<u>278</u>	<u>35.1</u>	254	38.4	255	38.4	<u>254</u>	<u>38.4</u>
401.bzip2	<u>452</u>	<u>21.4</u>	451	21.4	453	21.3	451	21.4	<u>449</u>	<u>21.5</u>	449	21.5
403.gcc	243	33.1	244	32.9	<u>243</u>	<u>33.1</u>	243	33.1	244	32.9	<u>243</u>	<u>33.1</u>
429.mcf	163	55.8	169	54.1	<u>164</u>	<u>55.6</u>	<u>163</u>	<u>56.1</u>	165	55.4	162	56.4
445.gobmk	405	25.9	<u>405</u>	<u>25.9</u>	406	25.9	405	25.9	<u>405</u>	<u>25.9</u>	406	25.9
456.hammer	<u>127</u>	<u>73.3</u>	127	73.4	127	73.2	<u>127</u>	<u>73.3</u>	127	73.4	127	73.2
458.sjeng	399	30.3	398	30.4	<u>398</u>	<u>30.4</u>	<u>393</u>	<u>30.8</u>	393	30.8	394	30.7
462.libquantum	2.81	7380	<u>2.80</u>	<u>7390</u>	2.80	7410	2.81	7380	<u>2.80</u>	<u>7390</u>	2.80	7410
464.h264ref	444	49.8	<u>443</u>	<u>49.9</u>	443	50.0	444	49.8	<u>443</u>	<u>49.9</u>	443	50.0
471.omnetpp	<u>145</u>	<u>43.0</u>	143	43.8	146	42.9	<u>130</u>	<u>48.2</u>	130	48.1	129	48.4
473.astar	224	31.4	222	31.6	<u>223</u>	<u>31.5</u>	224	31.4	222	31.6	<u>223</u>	<u>31.5</u>
483.xalancbmk	<u>107</u>	<u>64.4</u>	109	63.4	103	67.2	98.4	70.1	99.4	69.4	<u>99.2</u>	<u>69.5</u>

Results appear in the order in which they were run. Bold underlined text indicates a median measurement.

Submit Notes

The config file option 'submit' was used.

Operating System Notes

Stack size set to unlimited using "ulimit -s unlimited"

Platform Notes

BIOS settings:

Snoop Mode set to Opportunistic Snoop Broadcast

Virtualization Technology disabled

System Profile set to custom

CPU Performance set to Maximum Performance

C States set to Autonomous

C1E disabled

Energy Efficient Turbo disabled

Uncore Frequency set to Dynamic

Energy Efficiency Policy set to Performance

Memory Patrol Scrub disabled

Sysinfo program /root/cpu2006-1.2/config/sysinfo.rev6914

\$Rev: 6914 \$ \$Date:: 2014-06-25 #\$ e3fbb8667b5a285932ceab81e28219e1

running on linux-4pvp Fri Apr 22 11:19:18 2016

This section contains SUT (System Under Test) info as seen by some common utilities. To remove or add to this section, see:

<http://www.spec.org/cpu2006/Docs/config.html#sysinfo>

Continued on next page



SPEC CINT2006 Result

Copyright 2006-2016 Standard Performance Evaluation Corporation

Dell Inc.

SPECint2006 = 62.4

PowerEdge FC830 (Intel Xeon E5-4669 v4, 2.20 GHz)

SPECint_base2006 = 60.8

CPU2006 license: 55

Test date: Apr-2016

Test sponsor: Dell Inc.

Hardware Availability: Jun-2016

Tested by: Dell Inc.

Software Availability: Mar-2016

Platform Notes (Continued)

```

From /proc/cpuinfo
model name : Intel(R) Xeon(R) CPU E5-4669 v4 @ 2.20GHz
 4 "physical id"s (chips)
 176 "processors"
cores, siblings (Caution: counting these is hw and system dependent. The
following excerpts from /proc/cpuinfo might not be reliable. Use with
caution.)
  cpu cores : 22
  siblings  : 44
  physical 0: cores 0 1 2 3 4 5 8 9 10 11 12 16 17 18 19 20 21 24 25 26 27
 28
  physical 1: cores 0 1 2 3 4 5 8 9 10 11 12 16 17 18 19 20 21 24 25 26 27
 28
  physical 2: cores 0 1 2 3 4 5 8 9 10 11 12 16 17 18 19 20 21 24 25 26 27
 28
  physical 3: cores 0 1 2 3 4 5 8 9 10 11 12 16 17 18 19 20 21 24 25 26 27
 28
cache size : 56320 KB

```

```

From /proc/meminfo
MemTotal:      529326748 kB
HugePages_Total:      0
Hugepagesize:    2048 kB

```

```

/usr/bin/lsb_release -d
SUSE Linux Enterprise Server 12 SP1

```

```

From /etc/*release* /etc/*version*
SuSE-release:
SUSE Linux Enterprise Server 12 (x86_64)
VERSION = 12
PATCHLEVEL = 1
# This file is deprecated and will be removed in a future service pack or
release.
# Please check /etc/os-release for details about this release.
os-release:
NAME="SLES"
VERSION="12-SP1"
VERSION_ID="12.1"
PRETTY_NAME="SUSE Linux Enterprise Server 12 SP1"
ID="sles"
ANSI_COLOR="0;32"
CPE_NAME="cpe:/o:suse:sles:12:sp1"

```

```

uname -a:
Linux linux-4pvp 3.12.49-11-default #1 SMP Wed Nov 11 20:52:43 UTC 2015
(8d714a0) x86_64 x86_64 x86_64 GNU/Linux

```

run-level 3 Apr 22 11:18 last=5

```

SPEC is set to: /root/cpu2006-1.2
Filesystem      Type  Size  Used Avail Use% Mounted on

```

Continued on next page



SPEC CINT2006 Result

Copyright 2006-2016 Standard Performance Evaluation Corporation

Dell Inc.

SPECint2006 = 62.4

PowerEdge FC830 (Intel Xeon E5-4669 v4, 2.20 GHz)

SPECint_base2006 = 60.8

CPU2006 license: 55

Test date: Apr-2016

Test sponsor: Dell Inc.

Hardware Availability: Jun-2016

Tested by: Dell Inc.

Software Availability: Mar-2016

Platform Notes (Continued)

/dev/sda2 xfs 271G 12G 259G 5% /
Additional information from dmidecode:

Warning: Use caution when you interpret this section. The 'dmidecode' program reads system data which is "intended to allow hardware to be accurately determined", but the intent may not be met, as there are frequent changes to hardware, firmware, and the "DMTF SMBIOS" standard.

BIOS Dell Inc. 2.0.2 04/14/2016

Memory:

5x 002C00B3002C 18ASF2G72PDZ-2G3A1 16 GB 2 rank 2400 MHz
19x 00AD00B300AD HMA82GR7MFR8N-UH 16 GB 2 rank 2400 MHz
8x 00AD063200AD HMA82GR7MFR8N-UH 16 GB 2 rank 2400 MHz
16x Not Specified Not Specified

(End of data from sysinfo program)

General Notes

Environment variables set by runspec before the start of the run:

KMP_AFFINITY = "granularity=fine,scatter"

LD_LIBRARY_PATH = "/root/cpu2006-1.2/libs/32:/root/cpu2006-1.2/libs/64:/root/cpu2006-1.2/sh"

OMP_NUM_THREADS = "88"

Binaries compiled on a system with 1x Intel Core i5-4670K CPU + 32GB memory using RedHat EL 7.1

Transparent Huge Pages enabled with:

echo always > /sys/kernel/mm/transparent_hugepage/enabled

Base Compiler Invocation

C benchmarks:

icc -m64

C++ benchmarks:

icpc -m64

Base Portability Flags

400.perlbench: -DSPEC_CPU_LP64 -DSPEC_CPU_LINUX_X64
401.bzip2: -DSPEC_CPU_LP64
403.gcc: -DSPEC_CPU_LP64
429.mcf: -DSPEC_CPU_LP64
445.gobmk: -DSPEC_CPU_LP64
456.hmmmer: -DSPEC_CPU_LP64
458.sjeng: -DSPEC_CPU_LP64

Continued on next page



SPEC CINT2006 Result

Copyright 2006-2016 Standard Performance Evaluation Corporation

Dell Inc.

SPECint2006 = 62.4

PowerEdge FC830 (Intel Xeon E5-4669 v4, 2.20 GHz)

SPECint_base2006 = 60.8

CPU2006 license: 55

Test date: Apr-2016

Test sponsor: Dell Inc.

Hardware Availability: Jun-2016

Tested by: Dell Inc.

Software Availability: Mar-2016

Base Portability Flags (Continued)

462.libquantum: -DSPEC_CPU_LP64 -DSPEC_CPU_LINUX
 464.h264ref: -DSPEC_CPU_LP64
 471.omnetpp: -DSPEC_CPU_LP64
 473.astar: -DSPEC_CPU_LP64
 483.xalancbmk: -DSPEC_CPU_LP64 -DSPEC_CPU_LINUX

Base Optimization Flags

C benchmarks:

-xCORE-AVX2 -ipo -O3 -no-prec-div -parallel -opt-prefetch -auto-p32

C++ benchmarks:

-xCORE-AVX2 -ipo -O3 -no-prec-div -opt-prefetch -auto-p32
-Wl,-z,muldefs -L/sh -lsmartheap64

Base Other Flags

C benchmarks:

403.gcc: -Dalloca=_alloca

Peak Compiler Invocation

C benchmarks (except as noted below):

icc -m64

400.perlbench: icc -m32 -L/opt/intel/compilers_and_libraries_2016/linux/compiler/lib/ia32_lin

C++ benchmarks (except as noted below):

icpc -m32 -L/opt/intel/compilers_and_libraries_2016/linux/compiler/lib/ia32_lin

473.astar: icpc -m64

Peak Portability Flags

400.perlbench: -D_FILE_OFFSET_BITS=64 -DSPEC_CPU_LINUX_IA32
 401.bzip2: -DSPEC_CPU_LP64
 403.gcc: -DSPEC_CPU_LP64
 429.mcf: -DSPEC_CPU_LP64
 445.gobmk: -DSPEC_CPU_LP64
 456.hmmer: -DSPEC_CPU_LP64

Continued on next page



SPEC CINT2006 Result

Copyright 2006-2016 Standard Performance Evaluation Corporation

Dell Inc.

SPECint2006 = 62.4

PowerEdge FC830 (Intel Xeon E5-4669 v4, 2.20 GHz)

SPECint_base2006 = 60.8

CPU2006 license: 55

Test date: Apr-2016

Test sponsor: Dell Inc.

Hardware Availability: Jun-2016

Tested by: Dell Inc.

Software Availability: Mar-2016

Peak Portability Flags (Continued)

458.sjeng: -DSPEC_CPU_LP64
 462.libquantum: -DSPEC_CPU_LP64 -DSPEC_CPU_LINUX
 464.h264ref: -DSPEC_CPU_LP64
 471.omnetpp: -D_FILE_OFFSET_BITS=64
 473.astar: -DSPEC_CPU_LP64
 483.xalancbmk: -D_FILE_OFFSET_BITS=64 -DSPEC_CPU_LINUX

Peak Optimization Flags

C benchmarks:

400.perlbench: -xCORE-AVX2(pass 2) -prof-gen:threadsafe(pass 1)
 -ipo(pass 2) -O3(pass 2) -no-prec-div(pass 2)
 -par-num-threads=1(pass 1) -prof-use(pass 2) -opt-prefetch
 -ansi-alias

401.bzp2: -xCORE-AVX2(pass 2) -prof-gen:threadsafe(pass 1)
 -ipo(pass 2) -O3(pass 2) -no-prec-div
 -par-num-threads=1(pass 1) -prof-use(pass 2) -auto-ilp32
 -opt-prefetch -ansi-alias

403.gcc: basepeak = yes

429.mcf: -xCORE-AVX2 -ipo -O3 -no-prec-div -parallel
 -opt-prefetch -auto-p32

445.gobmk: basepeak = yes

456.hmmer: basepeak = yes

458.sjeng: -xCORE-AVX2(pass 2) -prof-gen:threadsafe(pass 1)
 -ipo(pass 2) -O3(pass 2) -no-prec-div(pass 2)
 -par-num-threads=1(pass 1) -prof-use(pass 2) -unroll4

462.libquantum: basepeak = yes

464.h264ref: basepeak = yes

C++ benchmarks:

471.omnetpp: -xCORE-AVX2(pass 2) -prof-gen:threadsafe(pass 1)
 -ipo(pass 2) -O3(pass 2) -no-prec-div(pass 2)
 -par-num-threads=1(pass 1) -prof-use(pass 2)
 -opt-ra-region-strategy=block -ansi-alias
 -Wl,-z,muldefs -L/sh -lsmartheap

473.astar: basepeak = yes

Continued on next page



SPEC CINT2006 Result

Copyright 2006-2016 Standard Performance Evaluation Corporation

Dell Inc.

SPECint2006 = 62.4

PowerEdge FC830 (Intel Xeon E5-4669 v4, 2.20 GHz)

SPECint_base2006 = 60.8

CPU2006 license: 55

Test date: Apr-2016

Test sponsor: Dell Inc.

Hardware Availability: Jun-2016

Tested by: Dell Inc.

Software Availability: Mar-2016

Peak Optimization Flags (Continued)

483.xalanbmk: -xCORE-AVX2 -ipo -O3 -no-prec-div -opt-prefetch
-ansi-alias -Wl,-z,muldefs -L/sh -lsmartheap

Peak Other Flags

C benchmarks:

403.gcc: -Dalloca=_alloca

The flags files that were used to format this result can be browsed at

<http://www.spec.org/cpu2006/flags/Intel-ic16.0-official-linux64.html>

<http://www.spec.org/cpu2006/flags/Dell-Platform-Settings-V1.2-revD.20151006.html>

You can also download the XML flags sources by saving the following links:

<http://www.spec.org/cpu2006/flags/Intel-ic16.0-official-linux64.xml>

<http://www.spec.org/cpu2006/flags/Dell-Platform-Settings-V1.2-revD.20151006.xml>

SPEC and SPECint are registered trademarks of the Standard Performance Evaluation Corporation. All other brand and product names appearing in this result are trademarks or registered trademarks of their respective holders.

For questions about this result, please contact the tester.
For other inquiries, please contact webmaster@spec.org.

Tested with SPEC CPU2006 v1.2.
Report generated on Tue Jun 28 17:29:54 2016 by SPEC CPU2006 PS/PDF formatter v6932.
Originally published on 28 June 2016.