



# SPEC<sup>®</sup> CINT2006 Result

Copyright 2006-2016 Standard Performance Evaluation Corporation

Dell Inc.

SPECint<sup>®</sup>2006 = 52.4

PowerEdge T630 (Intel Xeon E5-2660 v4, 2.00 GHz)

SPECint\_base2006 = 50.5

CPU2006 license: 55

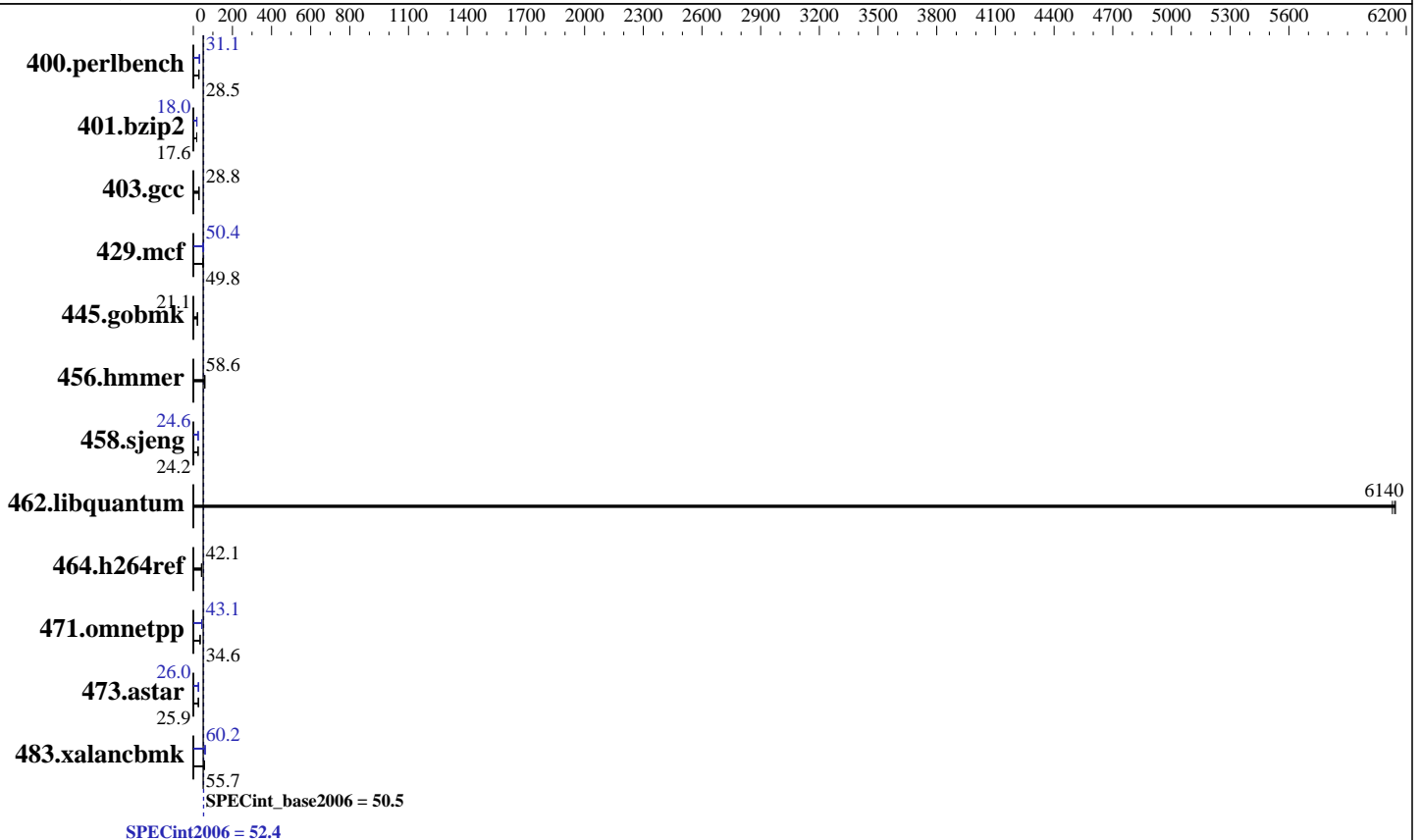
Test date: Jan-2016

Test sponsor: Dell Inc.

Hardware Availability: Mar-2016

Tested by: Dell Inc.

Software Availability: Mar-2016



## Hardware

CPU Name: Intel Xeon E5-2660 v4  
 CPU Characteristics: Intel Turbo Boost Technology up to 3.20 GHz  
 CPU MHz: 2000  
 FPU: Integrated  
 CPU(s) enabled: 28 cores, 2 chips, 14 cores/chip, 2 threads/core  
 CPU(s) orderable: 1,2 chip  
 Primary Cache: 32 KB I + 32 KB D on chip per core  
 Secondary Cache: 256 KB I+D on chip per core  
 L3 Cache: 35 MB I+D on chip per chip  
 Other Cache: None  
 Memory: 512 GB (16 x 32 GB 2Rx4 PC4-2400T-R)  
 Disk Subsystem: 1 x 300 GB 15000 RPM SAS  
 Other Hardware: None

## Software

Operating System: Red Hat Enterprise Linux Server release 7.1 (Maipo)  
 3.10.0-229.el7.x86\_64  
 Compiler: C/C++: Version 16.0.0.101 of Intel C++ Studio XE for Linux  
 Auto Parallel: Yes  
 File System: xfs  
 System State: Run level 3 (multi-user)  
 Base Pointers: 32/64-bit  
 Peak Pointers: 32/64-bit  
 Other Software: Microquill SmartHeap V10.2



# SPEC CINT2006 Result

Copyright 2006-2016 Standard Performance Evaluation Corporation

Dell Inc.

SPECint2006 = 52.4

PowerEdge T630 (Intel Xeon E5-2660 v4, 2.00 GHz)

SPECint\_base2006 = 50.5

CPU2006 license: 55  
Test sponsor: Dell Inc.  
Tested by: Dell Inc.

Test date: Jan-2016  
Hardware Availability: Mar-2016  
Software Availability: Mar-2016

## Results Table

Benchmark	Base						Peak					
	Seconds	Ratio	Seconds	Ratio	Seconds	Ratio	Seconds	Ratio	Seconds	Ratio	Seconds	Ratio
400.perlbench	342	28.5	345	28.3	<b>343</b>	<b>28.5</b>	313	31.2	<b>314</b>	<b>31.1</b>	314	31.1
401.bzip2	<b>549</b>	<b>17.6</b>	548	17.6	550	17.5	<b>537</b>	<b>18.0</b>	536	18.0	537	18.0
403.gcc	<b>280</b>	<b>28.8</b>	280	28.8	279	28.8	<b>280</b>	<b>28.8</b>	280	28.8	279	28.8
429.mcf	<b>183</b>	<b>49.8</b>	182	50.1	187	48.7	182	50.2	179	50.8	<b>181</b>	<b>50.4</b>
445.gobmk	<b>497</b>	<b>21.1</b>	498	21.1	497	21.1	<b>497</b>	<b>21.1</b>	498	21.1	497	21.1
456.hammer	<b>159</b>	<b>58.6</b>	159	58.6	159	58.5	<b>159</b>	<b>58.6</b>	159	58.6	159	58.5
458.sjeng	<b>500</b>	<b>24.2</b>	500	24.2	501	24.2	<b>491</b>	<b>24.6</b>	491	24.6	491	24.6
462.libquantum	<b>3.37</b>	<b>6140</b>	3.38	6130	3.37	6140	<b>3.37</b>	<b>6140</b>	3.38	6130	3.37	6140
464.h264ref	<b>526</b>	<b>42.1</b>	525	42.1	527	42.0	<b>526</b>	<b>42.1</b>	525	42.1	527	42.0
471.omnetpp	181	34.6	<b>181</b>	<b>34.6</b>	181	34.5	145	43.1	146	42.8	<b>145</b>	<b>43.1</b>
473.astar	270	26.0	<b>271</b>	<b>25.9</b>	271	25.9	270	26.0	270	26.0	<b>270</b>	<b>26.0</b>
483.xalancbmk	124	55.7	<b>124</b>	<b>55.7</b>	124	55.7	115	60.2	115	60.1	<b>115</b>	<b>60.2</b>

Results appear in the order in which they were run. Bold underlined text indicates a median measurement.

## Submit Notes

The config file option 'submit' was used.

## Operating System Notes

Stack size set to unlimited using "ulimit -s unlimited"

## Platform Notes

BIOS settings:

Snoop Mode set to Home Snoop  
Virtualization Technology disabled  
System Profile set to Performance  
Memory Patrol Scrub disabled  
Sysinfo program /root/cpu2006-1.2/config/sysinfo.rev6914  
\$Rev: 6914 \$ \$Date:: 2014-06-25 #\$ e3fbb8667b5a285932ceab81e28219e1  
running on localhost.localdomain Mon Jan 11 03:47:30 2016

This section contains SUT (System Under Test) info as seen by some common utilities. To remove or add to this section, see:  
<http://www.spec.org/cpu2006/Docs/config.html#sysinfo>

From /proc/cpuinfo

```
model name : Intel(R) Xeon(R) CPU E5-2660 v4@ 2.00GHz
2 "physical id"s (chips)
56 "processors"
```

cores, siblings (Caution: counting these is hw and system dependent. The following excerpts from /proc/cpuinfo might not be reliable. Use with

Continued on next page



# SPEC CINT2006 Result

Copyright 2006-2016 Standard Performance Evaluation Corporation

Dell Inc.

SPECint2006 = 52.4

PowerEdge T630 (Intel Xeon E5-2660 v4, 2.00 GHz)

SPECint\_base2006 = 50.5

CPU2006 license: 55

Test date: Jan-2016

Test sponsor: Dell Inc.

Hardware Availability: Mar-2016

Tested by: Dell Inc.

Software Availability: Mar-2016

## Platform Notes (Continued)

```

caution.)
  cpu cores : 14
  siblings  : 28
  physical 0: cores 0 1 2 3 4 5 6 8 9 10 11 12 13 14
  physical 1: cores 0 1 2 3 4 5 6 8 9 10 11 12 13 14
  cache size : 35840 KB

```

```

From /proc/meminfo
MemTotal:      528284164 kB
HugePages_Total:      0
Hugepagesize:    2048 kB

```

```

From /etc/*release* /etc/*version*
os-release:
NAME="Red Hat Enterprise Linux Server"
VERSION="7.1 (Maipo)"
ID="rhel"
ID_LIKE="fedora"
VERSION_ID="7.1"
PRETTY_NAME="Red Hat Enterprise Linux Server 7.1 (Maipo)"
ANSI_COLOR="0;31"
CPE_NAME="cpe:/o:redhat:enterprise_linux:7.1:GA:server"
redhat-release: Red Hat Enterprise Linux Server release 7.1 (Maipo)
system-release: Red Hat Enterprise Linux Server release 7.1 (Maipo)
system-release-cpe: cpe:/o:redhat:enterprise_linux:7.1:ga:server

```

```

uname -a:
Linux localhost.localdomain 3.10.0-229.el7.x86_64 #1 SMP Thu Jan 29 18:37:38
EST 2015 x86_64 x86_64 x86_64 GNU/Linux

```

run-level 3 Jan 11 03:45

```

SPEC is set to: /root/cpu2006-1.2
Filesystem      Type  Size  Used Avail Use% Mounted on
/dev/sda2        xfs   200G  19G  182G  10% /

```

Additional information from dmidecode:

Warning: Use caution when you interpret this section. The 'dmidecode' program reads system data which is "intended to allow hardware to be accurately determined", but the intent may not be met, as there are frequent changes to hardware, firmware, and the "DMTF SMBIOS" standard.

```

BIOS Dell Inc. 1.7.12 12/22/2015
Memory:
16x 00CE00B300CE M393A4K40BB1-CRC 32 GB 2 rank 2400 MHz
8x Not Specified Not Specified

```

(End of data from sysinfo program)



# SPEC CINT2006 Result

Copyright 2006-2016 Standard Performance Evaluation Corporation

Dell Inc.

SPECint2006 = 52.4

PowerEdge T630 (Intel Xeon E5-2660 v4, 2.00 GHz)

SPECint\_base2006 = 50.5

CPU2006 license: 55

Test date: Jan-2016

Test sponsor: Dell Inc.

Hardware Availability: Mar-2016

Tested by: Dell Inc.

Software Availability: Mar-2016

## General Notes

Environment variables set by runspec before the start of the run:

KMP\_AFFINITY = "granularity=fine,scatter"

LD\_LIBRARY\_PATH = "/root/cpu2006-1.2/libs/32:/root/cpu2006-1.2/libs/64:/root/cpu2006-1.2/sh"

OMP\_NUM\_THREADS = "28"

Binaries compiled on a system with 1x Intel Core i5-4670K CPU + 32GB memory using RedHat EL 7.1

Transparent Huge Pages enabled with:

echo always > /sys/kernel/mm/transparent\_hugepage/enabled

## Base Compiler Invocation

C benchmarks:

icc -m64

C++ benchmarks:

icpc -m64

## Base Portability Flags

400.perlbench: -DSPEC\_CPU\_LP64 -DSPEC\_CPU\_LINUX\_X64

401.bzip2: -DSPEC\_CPU\_LP64

403.gcc: -DSPEC\_CPU\_LP64

429.mcf: -DSPEC\_CPU\_LP64

445.gobmk: -DSPEC\_CPU\_LP64

456.hmmer: -DSPEC\_CPU\_LP64

458.sjeng: -DSPEC\_CPU\_LP64

462.libquantum: -DSPEC\_CPU\_LP64 -DSPEC\_CPU\_LINUX

464.h264ref: -DSPEC\_CPU\_LP64

471.omnetpp: -DSPEC\_CPU\_LP64

473.astar: -DSPEC\_CPU\_LP64

483.xalancbmk: -DSPEC\_CPU\_LP64 -DSPEC\_CPU\_LINUX

## Base Optimization Flags

C benchmarks:

-xCORE-AVX2 -ipo -O3 -no-prec-div -parallel -opt-prefetch -auto-p32

C++ benchmarks:

-xCORE-AVX2 -ipo -O3 -no-prec-div -opt-prefetch -auto-p32

-Wl,-z,muldefs -L/sh -lsmarthheap64



# SPEC CINT2006 Result

Copyright 2006-2016 Standard Performance Evaluation Corporation

Dell Inc.

SPECint2006 = 52.4

PowerEdge T630 (Intel Xeon E5-2660 v4, 2.00 GHz)

SPECint\_base2006 = 50.5

CPU2006 license: 55

Test date: Jan-2016

Test sponsor: Dell Inc.

Hardware Availability: Mar-2016

Tested by: Dell Inc.

Software Availability: Mar-2016

## Base Other Flags

C benchmarks:

403.gcc: -Dalloca=\_alloca

## Peak Compiler Invocation

C benchmarks (except as noted below):

icc -m64

400.perlbench: icc -m32 -L/opt/intel/compilers\_and\_libraries\_2016/linux/compiler/lib/ia32\_lin

C++ benchmarks (except as noted below):

icpc -m32 -L/opt/intel/compilers\_and\_libraries\_2016/linux/compiler/lib/ia32\_lin

473.astar: icpc -m64

## Peak Portability Flags

400.perlbench: -D\_FILE\_OFFSET\_BITS=64 -DSPEC\_CPU\_LINUX\_IA32  
401.bzip2: -DSPEC\_CPU\_LP64  
403.gcc: -DSPEC\_CPU\_LP64  
429.mcf: -DSPEC\_CPU\_LP64  
445.gobmk: -DSPEC\_CPU\_LP64  
456.hmmer: -DSPEC\_CPU\_LP64  
458.sjeng: -DSPEC\_CPU\_LP64  
462.libquantum: -DSPEC\_CPU\_LP64 -DSPEC\_CPU\_LINUX  
464.h264ref: -DSPEC\_CPU\_LP64  
471.omnetpp: -D\_FILE\_OFFSET\_BITS=64  
473.astar: -DSPEC\_CPU\_LP64  
483.xalancbmk: -D\_FILE\_OFFSET\_BITS=64 -DSPEC\_CPU\_LINUX

## Peak Optimization Flags

C benchmarks:

400.perlbench: -xCORE-AVX2(pass 2) -prof-gen:threadsafe(pass 1)  
-ipo(pass 2) -O3(pass 2) -no-prec-div(pass 2)  
-par-num-threads=1(pass 1) -prof-use(pass 2) -opt-prefetch  
-ansi-alias

401.bzip2: -xCORE-AVX2(pass 2) -prof-gen:threadsafe(pass 1)  
-ipo(pass 2) -O3(pass 2) -no-prec-div  
-par-num-threads=1(pass 1) -prof-use(pass 2) -auto-ilp32  
-opt-prefetch -ansi-alias

Continued on next page



# SPEC CINT2006 Result

Copyright 2006-2016 Standard Performance Evaluation Corporation

Dell Inc.

SPECint2006 = 52.4

PowerEdge T630 (Intel Xeon E5-2660 v4, 2.00 GHz)

SPECint\_base2006 = 50.5

CPU2006 license: 55

Test date: Jan-2016

Test sponsor: Dell Inc.

Hardware Availability: Mar-2016

Tested by: Dell Inc.

Software Availability: Mar-2016

## Peak Optimization Flags (Continued)

403.gcc: basepeak = yes

429.mcf: -xCORE-AVX2 -ipo -O3 -no-prec-div -parallel  
-opt-prefetch -auto-p32

445.gobmk: basepeak = yes

456.hmmer: basepeak = yes

458.sjeng: -xCORE-AVX2(pass 2) -prof-gen:threadsafe(pass 1)  
-ipo(pass 2) -O3(pass 2) -no-prec-div(pass 2)  
-par-num-threads=1(pass 1) -prof-use(pass 2) -unroll4

462.libquantum: basepeak = yes

464.h264ref: basepeak = yes

C++ benchmarks:

471.omnetpp: -xCORE-AVX2(pass 2) -prof-gen:threadsafe(pass 1)  
-ipo(pass 2) -O3(pass 2) -no-prec-div(pass 2)  
-par-num-threads=1(pass 1) -prof-use(pass 2)  
-opt-ra-region-strategy=block -ansi-alias  
-Wl,-z,muldefs -L/sh -lsmarheap

473.astar: -xCORE-AVX2 -ipo -O3 -no-prec-div -opt-prefetch  
-auto-p32 -Wl,-z,muldefs -L/sh -lsmarheap64

483.xalancbmk: -xCORE-AVX2 -ipo -O3 -no-prec-div -opt-prefetch  
-ansi-alias -Wl,-z,muldefs -L/sh -lsmarheap

## Peak Other Flags

C benchmarks:

403.gcc: -Dalloca=\_alloca

The flags files that were used to format this result can be browsed at

<http://www.spec.org/cpu2006/flags/Intel-ic16.0-official-linux64.html>

<http://www.spec.org/cpu2006/flags/Dell-Platform-Settings-V1.2-revD.20151006.html>

You can also download the XML flags sources by saving the following links:

<http://www.spec.org/cpu2006/flags/Intel-ic16.0-official-linux64.xml>

<http://www.spec.org/cpu2006/flags/Dell-Platform-Settings-V1.2-revD.20151006.xml>



# SPEC CINT2006 Result

Copyright 2006-2016 Standard Performance Evaluation Corporation

Dell Inc.

SPECint2006 = 52.4

PowerEdge T630 (Intel Xeon E5-2660 v4, 2.00 GHz)

SPECint\_base2006 = 50.5

CPU2006 license: 55

Test date: Jan-2016

Test sponsor: Dell Inc.

Hardware Availability: Mar-2016

Tested by: Dell Inc.

Software Availability: Mar-2016

SPEC and SPECint are registered trademarks of the Standard Performance Evaluation Corporation. All other brand and product names appearing in this result are trademarks or registered trademarks of their respective holders.

For questions about this result, please contact the tester.  
For other inquiries, please contact [webmaster@spec.org](mailto:webmaster@spec.org).

Tested with SPEC CPU2006 v1.2.  
Report generated on Tue Apr 5 14:54:19 2016 by SPEC CPU2006 PS/PDF formatter v6932.  
Originally published on 5 April 2016.