



# SPEC® CINT2006 Result

Copyright 2006-2015 Standard Performance Evaluation Corporation

## Huawei

**SPECint®2006 = 66.5**

Huawei CH222 V3 (Intel Xeon E5-2698 v3)

**SPECint\_base2006 = 64.2**

CPU2006 license: 3175

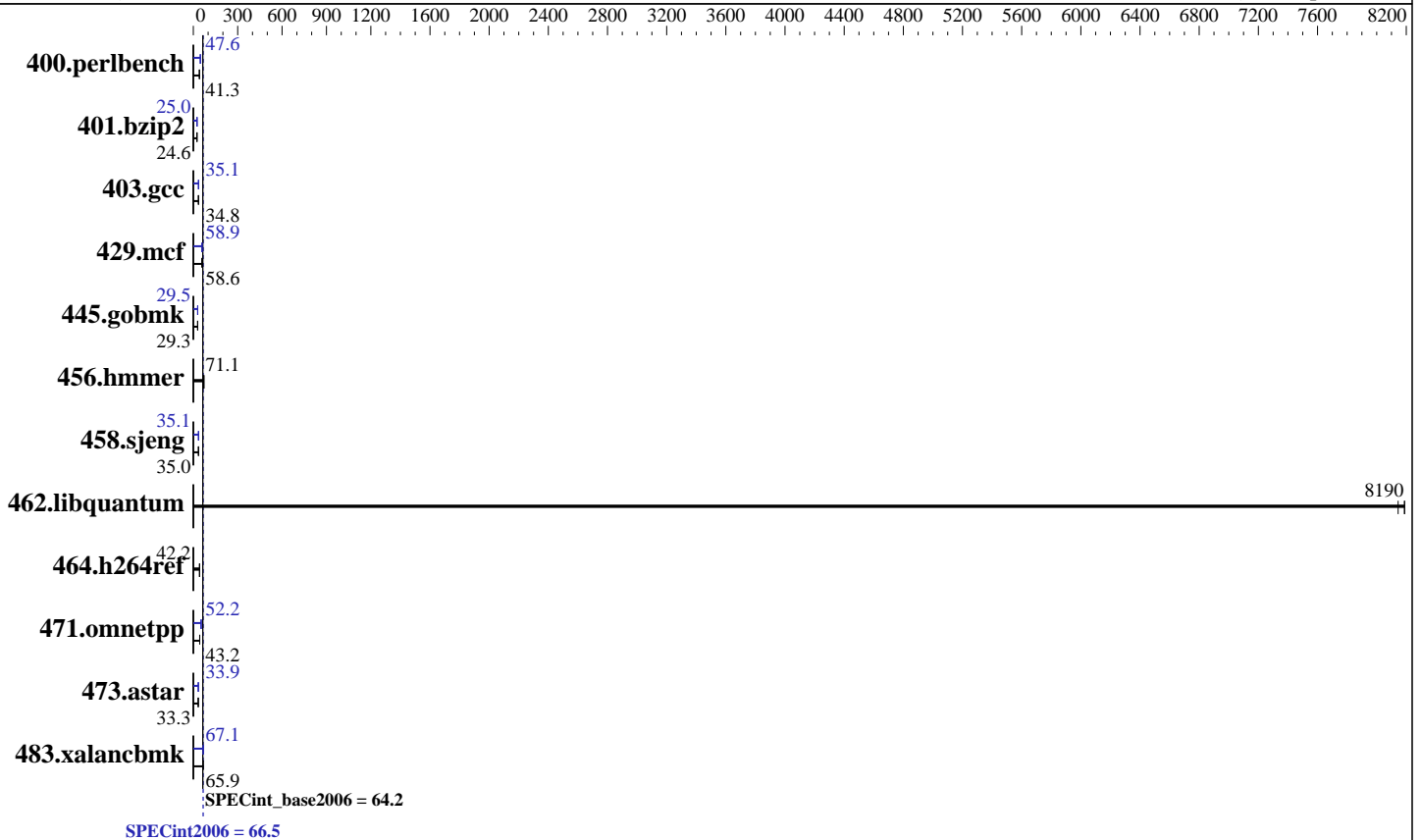
Test sponsor: Huawei

Tested by: Huawei

Test date: Jan-2015

Hardware Availability: Sep-2014

Software Availability: Sep-2014



### Hardware

CPU Name: Intel Xeon E5-2698 v3  
 CPU Characteristics: Intel Turbo Boost Technology up to 3.60 GHz  
 CPU MHz: 2300  
 FPU: Integrated  
 CPU(s) enabled: 32 cores, 2 chips, 16 cores/chip  
 CPU(s) orderable: 1,2 chip  
 Primary Cache: 32 KB I + 32 KB D on chip per core  
 Secondary Cache: 256 KB I+D on chip per core  
 L3 Cache: 40 MB I+D on chip per chip  
 Other Cache: None  
 Memory: 256 GB (16 x 16 GB 2Rx4 PC4-2133P-R)  
 Disk Subsystem: 1 x 300 GB SAS, 10000 RPM  
 Other Hardware: None

### Software

Operating System: Red Hat Enterprise Linux Server release 7.0 (Maipo)  
 3.10.0-123.el7.x86\_64  
 Compiler: C/C++: Version 15.0.0.090 of Intel C++ Studio XE for Linux  
 Auto Parallel: Yes  
 File System: ext4  
 System State: Run level 3 (multi-user)  
 Base Pointers: 32/64-bit  
 Peak Pointers: 32/64-bit  
 Other Software: Microquill SmartHeap V10.0



# SPEC CINT2006 Result

Copyright 2006-2015 Standard Performance Evaluation Corporation

Huawei

SPECint2006 = 66.5

Huawei CH222 V3 (Intel Xeon E5-2698 v3)

SPECint\_base2006 = 64.2

CPU2006 license: 3175  
Test sponsor: Huawei  
Tested by: Huawei

Test date: Jan-2015  
Hardware Availability: Sep-2014  
Software Availability: Sep-2014

## Results Table

Benchmark	Base						Peak					
	Seconds	Ratio	Seconds	Ratio	Seconds	Ratio	Seconds	Ratio	Seconds	Ratio	Seconds	Ratio
400.perlbench	<u>236</u>	<u>41.3</u>	236	41.3	237	41.2	205	47.5	<u>205</u>	<u>47.6</u>	205	47.7
401.bzip2	<u>392</u>	<u>24.6</u>	392	24.6	393	24.6	386	25.0	<u>386</u>	<u>25.0</u>	386	25.0
403.gcc	231	34.9	<u>231</u>	<u>34.8</u>	231	34.8	229	35.1	229	35.1	<u>229</u>	<u>35.1</u>
429.mcf	<u>156</u>	<u>58.6</u>	152	60.1	157	57.9	<u>155</u>	<u>58.9</u>	155	58.8	155	59.0
445.gobmk	359	29.3	<u>358</u>	<u>29.3</u>	357	29.4	<u>356</u>	<u>29.5</u>	356	29.5	356	29.4
456.hammer	131	71.0	<u>131</u>	<u>71.1</u>	131	71.1	131	71.0	<u>131</u>	<u>71.1</u>	131	71.1
458.sjeng	<u>346</u>	<u>35.0</u>	346	35.0	346	35.0	<u>344</u>	<u>35.1</u>	344	35.1	344	35.2
462.libquantum	<u>2.53</u>	<u>8190</u>	2.54	8150	2.53	8190	<u>2.53</u>	<u>8190</u>	2.54	8150	2.53	8190
464.h264ref	<u>524</u>	<u>42.2</u>	526	42.1	522	42.4	<u>524</u>	<u>42.2</u>	526	42.1	522	42.4
471.omnetpp	146	42.9	<u>145</u>	<u>43.2</u>	144	43.4	120	52.1	116	53.9	<u>120</u>	<u>52.2</u>
473.astar	<u>211</u>	<u>33.3</u>	211	33.2	210	33.4	<u>207</u>	<u>33.9</u>	207	33.9	209	33.5
483.xalancbmk	<u>105</u>	<u>65.9</u>	105	65.9	105	65.6	102	67.3	<u>103</u>	<u>67.1</u>	103	67.1

Results appear in the order in which they were run. Bold underlined text indicates a median measurement.

## Submit Notes

The config file option 'submit' was used.

## Operating System Notes

Stack size set to unlimited using "ulimit -s unlimited"

## Platform Notes

BIOS configuration:  
Set Power Efficiency Mode to Custom  
Set Snoop Mode to ES  
Set Hyper-Threading to Disabled  
Baseboard Management Controller used to adjust the fan speed to 100%  
Sysinfo program /spec15/config/sysinfo.rev6914  
\$Rev: 6914 \$ \$Date:: 2014-06-25 #\$ e3fbb8667b5a285932ceab81e28219e1  
running on localhost.localdomain Tue Jan 13 03:53:44 2015

This section contains SUT (System Under Test) info as seen by some common utilities. To remove or add to this section, see: <http://www.spec.org/cpu2006/Docs/config.html#sysinfo>

From /proc/cpuinfo  
model name : Intel(R) Xeon(R) CPU E5-2698 v3 @ 2.30GHz  
2 "physical id"s (chips)  
32 "processors"  
cores, siblings (Caution: counting these is hw and system dependent. The following excerpts from /proc/cpuinfo might not be reliable. Use with  
Continued on next page



# SPEC CINT2006 Result

Copyright 2006-2015 Standard Performance Evaluation Corporation

Huawei

SPECint2006 = 66.5

Huawei CH222 V3 (Intel Xeon E5-2698 v3)

SPECint\_base2006 = 64.2

CPU2006 license: 3175

Test sponsor: Huawei

Tested by: Huawei

Test date: Jan-2015

Hardware Availability: Sep-2014

Software Availability: Sep-2014

## Platform Notes (Continued)

```

caution.)
  cpu cores : 16
  siblings  : 16
  physical 0: cores 0 1 2 3 4 5 6 7 8 9 10 11 12 13 14 15
  physical 1: cores 0 1 2 3 4 5 6 7 8 9 10 11 12 13 14 15
  cache size : 40960 KB

```

```

From /proc/meminfo
MemTotal:      263719624 kB
HugePages_Total:      0
Hugepagesize:    2048 kB

```

```

From /etc/*release* /etc/*version*
os-release:
NAME="Red Hat Enterprise Linux Server"
VERSION="7.0 (Maipo)"
ID="rhel"
ID_LIKE="fedora"
VERSION_ID="7.0"
PRETTY_NAME="Red Hat Enterprise Linux Server 7.0 (Maipo)"
ANSI_COLOR="0;31"
CPE_NAME="cpe:/o:redhat:enterprise_linux:7.0:GA:server"
redhat-release: Red Hat Enterprise Linux Server release 7.0 (Maipo)
system-release: Red Hat Enterprise Linux Server release 7.0 (Maipo)
system-release-cpe: cpe:/o:redhat:enterprise_linux:7.0:ga:server

```

```

uname -a:
Linux localhost.localdomain 3.10.0-123.el7.x86_64 #1 SMP Mon May 5 11:16:57
EDT 2014 x86_64 x86_64 x86_64 GNU/Linux

```

run-level 3 Jan 13 03:49

```

SPEC is set to: /spec15
Filesystem      Type  Size  Used Avail Use% Mounted on
/dev/sdb1       ext4  237G  11G  215G   5% /

```

Additional information from dmidecode:

Warning: Use caution when you interpret this section. The 'dmidecode' program reads system data which is "intended to allow hardware to be accurately determined", but the intent may not be met, as there are frequent changes to hardware, firmware, and the "DMTF SMBIOS" standard.

BIOS Insyde Corp. 1.19 10/10/2014

Memory:

```

8x NO DIMM NO DIMM 3 rank
8x Samsung M393A2G40DB0-CPB 16 GB 1 rank 2133 MHz
8x Samsung M393A2G40DB0-CPB 16 GB 2 rank 2133 MHz

```

(End of data from sysinfo program)



# SPEC CINT2006 Result

Copyright 2006-2015 Standard Performance Evaluation Corporation

Huawei

SPECint2006 = 66.5

Huawei CH222 V3 (Intel Xeon E5-2698 v3)

SPECint\_base2006 = 64.2

CPU2006 license: 3175

Test sponsor: Huawei

Tested by: Huawei

Test date: Jan-2015

Hardware Availability: Sep-2014

Software Availability: Sep-2014

## General Notes

Environment variables set by runspec before the start of the run:

KMP\_AFFINITY = "granularity=fine,compact,1,0"

LD\_LIBRARY\_PATH = "/spec15/libs/32:/spec15/libs/64:/spec15/sh"

OMP\_NUM\_THREADS = "32"

Binaries compiled on a system with 1x Core i5-4670K CPU + 16GB memory using RedHat EL 7.0

Transparent Huge Pages enabled with:

echo always > /sys/kernel/mm/transparent\_hugepage/enabled

runspec command invoked through numactl i.e.:

numactl --interleave=all runspec <etc>

The Huawei CH121 V3 and Huawei CH222 V3 models are electronically equivalent.

The results have been measured on a Huawei CH121 V3 model.

## Base Compiler Invocation

C benchmarks:

icc -m64

C++ benchmarks:

icpc -m64

## Base Portability Flags

400.perlbench: -DSPEC\_CPU\_LP64 -DSPEC\_CPU\_LINUX\_X64

401.bzip2: -DSPEC\_CPU\_LP64

403.gcc: -DSPEC\_CPU\_LP64

429.mcf: -DSPEC\_CPU\_LP64

445.gobmk: -DSPEC\_CPU\_LP64

456.hmmer: -DSPEC\_CPU\_LP64

458.sjeng: -DSPEC\_CPU\_LP64

462.libquantum: -DSPEC\_CPU\_LP64 -DSPEC\_CPU\_LINUX

464.h264ref: -DSPEC\_CPU\_LP64

471.omnetpp: -DSPEC\_CPU\_LP64

473.astar: -DSPEC\_CPU\_LP64

483.xalancbmk: -DSPEC\_CPU\_LP64 -DSPEC\_CPU\_LINUX

## Base Optimization Flags

C benchmarks:

-xCORE-AVX2 -ipo -O3 -no-prec-div -parallel -opt-prefetch -auto-p32

C++ benchmarks:

-xCORE-AVX2 -ipo -O3 -no-prec-div -opt-prefetch -auto-p32

-Wl,-z,muldefs -L/sh -lsmarthheap64



# SPEC CINT2006 Result

Copyright 2006-2015 Standard Performance Evaluation Corporation

<b>Huawei</b>	<b>SPECint2006 =</b>	<b>66.5</b>
<b>Huawei CH222 V3 (Intel Xeon E5-2698 v3)</b>	<b>SPECint_base2006 =</b>	<b>64.2</b>

<b>CPU2006 license:</b> 3175	<b>Test date:</b> Jan-2015
<b>Test sponsor:</b> Huawei	<b>Hardware Availability:</b> Sep-2014
<b>Tested by:</b> Huawei	<b>Software Availability:</b> Sep-2014

## Base Other Flags

C benchmarks:

403.gcc: -Dalloca=\_alloca

## Peak Compiler Invocation

C benchmarks (except as noted below):

icc -m64

400.perlbench: icc -m32 -L/opt/intel/composer\_xe\_2015/lib/ia32

445.gobmk: icc -m32 -L/opt/intel/composer\_xe\_2015/lib/ia32

C++ benchmarks (except as noted below):

icpc -m32 -L/opt/intel/composer\_xe\_2015/lib/ia32

473.astar: icpc -m64

## Peak Portability Flags

400.perlbench: -DSPEC\_CPU\_LINUX\_IA32  
401.bzip2: -DSPEC\_CPU\_LP64  
403.gcc: -DSPEC\_CPU\_LP64  
429.mcf: -DSPEC\_CPU\_LP64  
456.hmmer: -DSPEC\_CPU\_LP64  
458.sjeng: -DSPEC\_CPU\_LP64  
462.libquantum: -DSPEC\_CPU\_LP64 -DSPEC\_CPU\_LINUX  
464.h264ref: -DSPEC\_CPU\_LP64  
473.astar: -DSPEC\_CPU\_LP64  
483.xalancbmk: -DSPEC\_CPU\_LINUX

## Peak Optimization Flags

C benchmarks:

400.perlbench: -xCORE-AVX2(pass 2) -prof-gen(pass 1) -ipo(pass 2)  
-O3(pass 2) -no-prec-div(pass 2) -prof-use(pass 2)  
-opt-prefetch -ansi-alias

401.bzip2: -xCORE-AVX2(pass 2) -prof-gen(pass 1) -ipo(pass 2)  
-O3(pass 2) -no-prec-div -prof-use(pass 2) -auto-ilp32  
-opt-prefetch -ansi-alias

Continued on next page



# SPEC CINT2006 Result

Copyright 2006-2015 Standard Performance Evaluation Corporation

Huawei

SPECint2006 = 66.5

Huawei CH222 V3 (Intel Xeon E5-2698 v3)

SPECint\_base2006 = 64.2

CPU2006 license: 3175

Test sponsor: Huawei

Tested by: Huawei

Test date: Jan-2015

Hardware Availability: Sep-2014

Software Availability: Sep-2014

## Peak Optimization Flags (Continued)

403.gcc: -xCORE-AVX2 -ipo -O3 -no-prec-div -inline-calloc  
-opt-malloc-options=3 -auto-ilp32

429.mcf: -xCORE-AVX2 -ipo -O3 -no-prec-div -parallel  
-opt-prefetch -auto-p32

445.gobmk: -xCORE-AVX2(pass 2) -prof-gen(pass 1) -prof-use(pass 2)  
-ansi-alias

456.hmmcr: basepeak = yes

458.sjeng: -xCORE-AVX2(pass 2) -prof-gen(pass 1) -ipo(pass 2)  
-O3(pass 2) -no-prec-div(pass 2) -prof-use(pass 2)  
-unroll4

462.libquantum: basepeak = yes

464.h264ref: basepeak = yes

C++ benchmarks:

471.omnetpp: -xCORE-AVX2(pass 2) -prof-gen(pass 1) -ipo(pass 2)  
-O3(pass 2) -no-prec-div(pass 2) -prof-use(pass 2)  
-opt-ra-region-strategy=block -ansi-alias  
-Wl,-z,muldefs -L/sh -lsmartheap

473.astar: -xCORE-AVX2 -ipo -O3 -no-prec-div -opt-prefetch  
-auto-p32 -Wl,-z,muldefs -L/sh -lsmartheap64

483.xalancbmk: -xCORE-AVX2 -ipo -O3 -no-prec-div -opt-prefetch  
-ansi-alias -Wl,-z,muldefs -L/sh -lsmartheap

## Peak Other Flags

C benchmarks:

403.gcc: -Dalloca=\_alloca

The flags files that were used to format this result can be browsed at

<http://www.spec.org/cpu2006/flags/Intel-ic15.0-official-linux64.html>

<http://www.spec.org/cpu2006/flags/Huawei-Platform-Settings-HASWELL-V1.4.html>

You can also download the XML flags sources by saving the following links:

<http://www.spec.org/cpu2006/flags/Intel-ic15.0-official-linux64.xml>

<http://www.spec.org/cpu2006/flags/Huawei-Platform-Settings-HASWELL-V1.4.xml>



# SPEC CINT2006 Result

Copyright 2006-2015 Standard Performance Evaluation Corporation

Huawei

SPECint2006 = 66.5

Huawei CH222 V3 (Intel Xeon E5-2698 v3)

SPECint\_base2006 = 64.2

CPU2006 license: 3175

Test sponsor: Huawei

Tested by: Huawei

Test date: Jan-2015

Hardware Availability: Sep-2014

Software Availability: Sep-2014

SPEC and SPECint are registered trademarks of the Standard Performance Evaluation Corporation. All other brand and product names appearing in this result are trademarks or registered trademarks of their respective holders.

For questions about this result, please contact the tester.  
For other inquiries, please contact [webmaster@spec.org](mailto:webmaster@spec.org).

Tested with SPEC CPU2006 v1.2.  
Report generated on Tue Feb 10 18:29:32 2015 by SPEC CPU2006 PS/PDF formatter v6932.  
Originally published on 10 February 2015.