



SPEC[®] CFP2006 Result

Copyright 2006-2014 Standard Performance Evaluation Corporation

Dell Inc.

SPECfp[®]2006 = 70.8

PowerEdge T620 (Intel Xeon E5-2630, 2.30 GHz)

SPECfp_base2006 = 67.4

CPU2006 license: 55

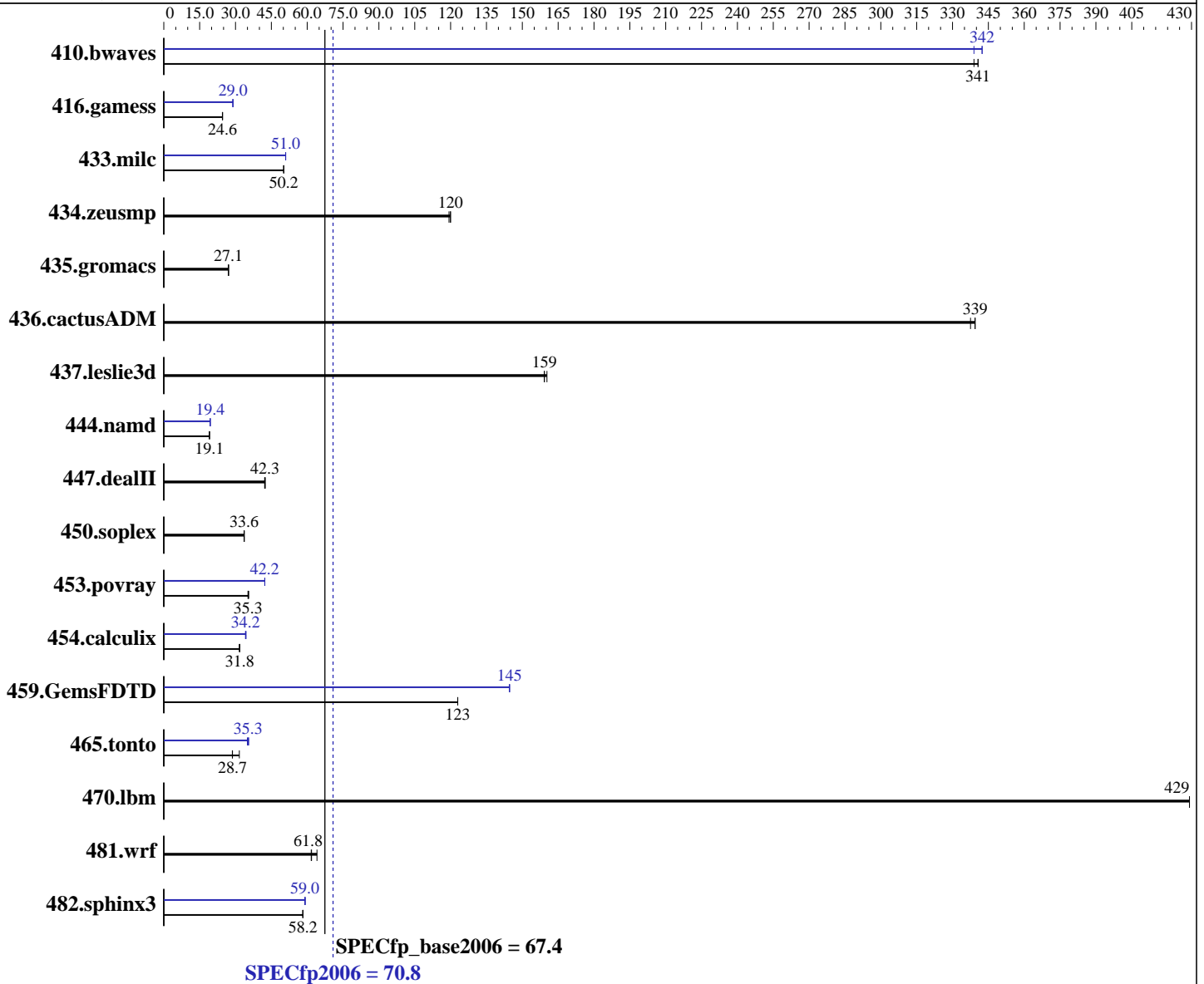
Test date: Feb-2012

Test sponsor: Dell Inc.

Hardware Availability: Mar-2012

Tested by: Dell Inc.

Software Availability: Feb-2012



Hardware

CPU Name: Intel Xeon E5-2630
CPU Characteristics: Intel Turbo Boost Technology up to 2.80 GHz
CPU MHz: 2300
FPU: Integrated
CPU(s) enabled: 12 cores, 2 chips, 6 cores/chip, 2 threads/core
CPU(s) orderable: 1,2 chip
Primary Cache: 32 KB I + 32 KB D on chip per core
Secondary Cache: 256 KB I+D on chip per core

Continued on next page

Software

Operating System: SUSE Linux Enterprise Server 11 SP2 (x86_64) 3.0.13-0.9-default
Compiler: C/C++: Version 12.1.0.225 of Intel C++ Studio XE for Linux;
Fortran: Version 12.1.0.225 of Intel Fortran Studio XE for Linux
Auto Parallel: Yes
File System: ext3
System State: Run level 3 (multi-user)

Continued on next page



SPEC CFP2006 Result

Copyright 2006-2014 Standard Performance Evaluation Corporation

Dell Inc.

SPECfp2006 = 70.8

PowerEdge T620 (Intel Xeon E5-2630, 2.30 GHz)

SPECfp_base2006 = 67.4

CPU2006 license: 55

Test date: Feb-2012

Test sponsor: Dell Inc.

Hardware Availability: Mar-2012

Tested by: Dell Inc.

Software Availability: Feb-2012

L3 Cache: 15 MB I+D on chip per chip
Other Cache: None
Memory: 128 GB (16 x 8 GB 2Rx4 PC3-12800R-11, ECC, running at 1333 MHz)
Disk Subsystem: 1 x 500 GB 7200 RPM SATA
Other Hardware: None

Base Pointers: 64-bit
Peak Pointers: 32/64-bit
Other Software: None

Results Table

Benchmark	Base						Peak					
	Seconds	Ratio	Seconds	Ratio	Seconds	Ratio	Seconds	Ratio	Seconds	Ratio	Seconds	Ratio
410.bwaves	40.1	339	39.9	341	39.9	341	39.7	342	40.1	339	39.7	342
416.gamess	796	24.6	797	24.6	799	24.5	676	29.0	676	29.0	679	28.9
433.milc	183	50.2	183	50.2	183	50.2	180	51.0	180	51.0	180	51.0
434.zeusmp	75.9	120	76.3	119	75.9	120	75.9	120	76.3	119	75.9	120
435.gromacs	264	27.0	264	27.1	263	27.1	264	27.0	264	27.1	263	27.1
436.cactusADM	35.2	339	35.4	338	35.2	339	35.2	339	35.4	338	35.2	339
437.leslie3d	58.6	160	59.0	159	59.0	159	58.6	160	59.0	159	59.0	159
444.namd	420	19.1	420	19.1	420	19.1	413	19.4	413	19.4	413	19.4
447.dealII	271	42.2	269	42.5	271	42.3	271	42.2	269	42.5	271	42.3
450.soplex	248	33.6	248	33.7	248	33.6	248	33.6	248	33.7	248	33.6
453.povray	151	35.2	150	35.5	151	35.3	126	42.2	126	42.2	126	42.3
454.calculix	260	31.8	259	31.8	261	31.6	241	34.2	241	34.2	240	34.4
459.GemsFDTD	86.3	123	86.3	123	86.3	123	73.4	145	73.4	145	73.4	145
465.tonto	311	31.6	342	28.7	343	28.7	281	35.0	277	35.5	279	35.3
470.lbm	32.0	429	32.0	429	32.0	429	32.0	429	32.0	429	32.0	429
481.wrf	181	61.7	174	64.1	181	61.8	181	61.7	174	64.1	181	61.8
482.sphinx3	335	58.3	335	58.2	335	58.2	329	59.2	330	59.0	330	59.0

Results appear in the order in which they were run. Bold underlined text indicates a median measurement.

Operating System Notes

Stack size set to unlimited using "ulimit -s unlimited"

Platform Notes

System Profile set to Custom
CPU Power Management set to Maximum Performance
Memory Frequency set to Maximum Performance
Turbo Boost set to Enabled
C States/C1E set to Enabled
Sysinfo program /root/CPU2006-1.2/config/sysinfo.rev6800
\$Rev: 6800 \$ \$Date:: 2011-10-11 #\$ 6f2ebdff5032aaa42e583f96b07f99d3
running on Miller Thu Feb 16 17:06:59 2012

Continued on next page



SPEC CFP2006 Result

Copyright 2006-2014 Standard Performance Evaluation Corporation

Dell Inc.

SPECfp2006 = 70.8

PowerEdge T620 (Intel Xeon E5-2630, 2.30 GHz)

SPECfp_base2006 = 67.4

CPU2006 license: 55

Test date: Feb-2012

Test sponsor: Dell Inc.

Hardware Availability: Mar-2012

Tested by: Dell Inc.

Software Availability: Feb-2012

Platform Notes (Continued)

This section contains SUT (System Under Test) info as seen by some common utilities. To remove or add to this section, see: <http://www.spec.org/cpu2006/Docs/config.html#sysinfo>

```

From /proc/cpuinfo
model name      : Intel(R) Xeon(R) CPU E5-2630 0 @ 2.30GHz
 2 "physical id"s (chips)
 24 "processors"
cores, siblings (Caution: counting these is hw and system dependent. The
following excerpts from /proc/cpuinfo might not be reliable. Use with
caution.)
  cpu cores    : 6
  siblings     : 12
  physical 0   : cores 0 1 2 3 4 5
  physical 1   : cores 0 1 2 3 4 5
cache size    : 15360 KB

```

```

From /proc/meminfo
MemTotal:      132122692 kB
HugePages_Total: 0
Hugepagesize:  2048 kB

```

```

/usr/bin/lsb_release -d
SUSE Linux Enterprise Server 11 (x86_64)

```

```

From /etc/*release* /etc/*version*
SuSE-release:
SUSE Linux Enterprise Server 11 (x86_64)
VERSION = 11
PATCHLEVEL = 2

```

```

uname -a:
Linux Miller 3.0.13-0.9-default #1 SMP Mon Jan 16 17:33:03 UTC 2012 (54ddfaf)
x86_64 x86_64 x86_64 GNU/Linux

```

run-level 3 Feb 16 09:54 last=5

```

SPEC is set to: /root/CPU2006-1.2
Filesystem      Type  Size  Used Avail Use% Mounted on
/dev/sdal       ext3  99G   69G   25G   74% /

```

Additional information from dmidecode:

(End of data from sysinfo program)

General Notes

Environment variables set by runspec before the start of the run:

```

KMP_AFFINITY = "granularity=fine,scatter"
LD_LIBRARY_PATH = "/root/CPU2006-1.2/libs/32:/root/CPU2006-1.2/libs/64"
OMP_NUM_THREADS = "12"

```

Continued on next page



SPEC CFP2006 Result

Copyright 2006-2014 Standard Performance Evaluation Corporation

Dell Inc.

SPECfp2006 = 70.8

PowerEdge T620 (Intel Xeon E5-2630, 2.30 GHz)

SPECfp_base2006 = 67.4

CPU2006 license: 55

Test date: Feb-2012

Test sponsor: Dell Inc.

Hardware Availability: Mar-2012

Tested by: Dell Inc.

Software Availability: Feb-2012

General Notes (Continued)

The Dell PowerEdge T620 and the Bull NovaScale T840 F3 models are electronically equivalent. The results have been measured on a Dell PowerEdge T620 model

Transparent Huge Pages disabled with:
 echo never > /sys/kernel/mm/transparent_hugepage/enabled

Filesystem page cache cleared with:
 echo 1> /proc/sys/vm/drop_caches

Binaries compiled on a system with 1x Core i7-860 CPU + 8GB memory using RHEL5.5

Base Compiler Invocation

C benchmarks:

icc -m64

C++ benchmarks:

icpc -m64

Fortran benchmarks:

ifort -m64

Benchmarks using both Fortran and C:

icc -m64 ifort -m64

Base Portability Flags

410.bwaves: -DSPEC_CPU_LP64
 416.gamess: -DSPEC_CPU_LP64
 433.milc: -DSPEC_CPU_LP64
 434.zeusmp: -DSPEC_CPU_LP64
 435.gromacs: -DSPEC_CPU_LP64 -nofor_main
 436.cactusADM: -DSPEC_CPU_LP64 -nofor_main
 437.leslie3d: -DSPEC_CPU_LP64
 444.namd: -DSPEC_CPU_LP64
 447.dealII: -DSPEC_CPU_LP64
 450.soplex: -DSPEC_CPU_LP64
 453.povray: -DSPEC_CPU_LP64
 454.calculix: -DSPEC_CPU_LP64 -nofor_main
 459.GemsFDTD: -DSPEC_CPU_LP64
 465.tonto: -DSPEC_CPU_LP64
 470.lbm: -DSPEC_CPU_LP64
 481.wrf: -DSPEC_CPU_LP64 -DSPEC_CPU_CASE_FLAG -DSPEC_CPU_LINUX
 482.sphinx3: -DSPEC_CPU_LP64



SPEC CFP2006 Result

Copyright 2006-2014 Standard Performance Evaluation Corporation

Dell Inc.

SPECfp2006 = 70.8

PowerEdge T620 (Intel Xeon E5-2630, 2.30 GHz)

SPECfp_base2006 = 67.4

CPU2006 license: 55

Test date: Feb-2012

Test sponsor: Dell Inc.

Hardware Availability: Mar-2012

Tested by: Dell Inc.

Software Availability: Feb-2012

Base Optimization Flags

C benchmarks:

-xAVX -ipo -O3 -no-prec-div -static -parallel -opt-prefetch
-ansi-alias

C++ benchmarks:

-xAVX -ipo -O3 -no-prec-div -static -opt-prefetch -ansi-alias

Fortran benchmarks:

-xAVX -ipo -O3 -no-prec-div -static -parallel -opt-prefetch

Benchmarks using both Fortran and C:

-xAVX -ipo -O3 -no-prec-div -static -parallel -opt-prefetch
-ansi-alias

Peak Compiler Invocation

C benchmarks:

icc -m64

C++ benchmarks:

icpc -m64

Fortran benchmarks:

ifort -m64

Benchmarks using both Fortran and C:

icc -m64 ifort -m64

Peak Portability Flags

Same as Base Portability Flags

Peak Optimization Flags

C benchmarks:

433.milc: -xAVX(pass 2) -prof-gen(pass 1) -ipo(pass 2) -O3(pass 2)
-no-prec-div(pass 2) -prof-use(pass 2) -static -auto-ilp32
-ansi-alias

470.lbm: basepeak = yes

482.sphinx3: -xAVX -ipo -O3 -no-prec-div -unroll2 -ansi-alias
-parallel

Continued on next page



SPEC CFP2006 Result

Copyright 2006-2014 Standard Performance Evaluation Corporation

Dell Inc.

SPECfp2006 = 70.8

PowerEdge T620 (Intel Xeon E5-2630, 2.30 GHz)

SPECfp_base2006 = 67.4

CPU2006 license: 55

Test date: Feb-2012

Test sponsor: Dell Inc.

Hardware Availability: Mar-2012

Tested by: Dell Inc.

Software Availability: Feb-2012

Peak Optimization Flags (Continued)

C++ benchmarks:

444.namd: -xAVX(pass 2) -prof-gen(pass 1) -ipo(pass 2) -O3(pass 2)
-no-prec-div(pass 2) -prof-use(pass 2) -fno-alias
-auto-ilp32

447.dealII: basepeak = yes

450.soplex: basepeak = yes

453.povray: -xAVX(pass 2) -prof-gen(pass 1) -ipo(pass 2) -O3(pass 2)
-no-prec-div(pass 2) -prof-use(pass 2) -unroll4 -ansi-alias

Fortran benchmarks:

410.bwaves: -xAVX -ipo -O3 -no-prec-div -opt-prefetch -parallel
-static

416.gamess: -xAVX(pass 2) -prof-gen(pass 1) -ipo(pass 2) -O3(pass 2)
-no-prec-div(pass 2) -prof-use(pass 2) -unroll2
-inline-level=0 -scalar-rep- -static

434.zeusmp: basepeak = yes

437.leslie3d: basepeak = yes

459.GemsFDTD: -xAVX(pass 2) -prof-gen(pass 1) -ipo(pass 2) -O3(pass 2)
-no-prec-div(pass 2) -prof-use(pass 2) -unroll2
-inline-level=0 -opt-prefetch -parallel

465.tonto: -xAVX(pass 2) -prof-gen(pass 1) -ipo(pass 2) -O3(pass 2)
-no-prec-div(pass 2) -prof-use(pass 2) -inline-calloc
-opt-malloc-options=3 -auto -unroll4

Benchmarks using both Fortran and C:

435.gromacs: basepeak = yes

436.cactusADM: basepeak = yes

454.calculix: -xAVX -ipo -O3 -no-prec-div -auto-ilp32 -ansi-alias

481.wrf: basepeak = yes

The flags files that were used to format this result can be browsed at

<http://www.spec.org/cpu2006/flags/Intel-ic12.1-official-linux64.20111122.html>

<http://www.spec.org/cpu2006/flags/Dell-Platform-Settings-V1.2-revA.20120328.html>



SPEC CFP2006 Result

Copyright 2006-2014 Standard Performance Evaluation Corporation

Dell Inc.

SPECfp2006 = 70.8

PowerEdge T620 (Intel Xeon E5-2630, 2.30 GHz)

SPECfp_base2006 = 67.4

CPU2006 license: 55

Test date: Feb-2012

Test sponsor: Dell Inc.

Hardware Availability: Mar-2012

Tested by: Dell Inc.

Software Availability: Feb-2012

You can also download the XML flags sources by saving the following links:

<http://www.spec.org/cpu2006/flags/Intel-ic12.1-official-linux64.20111122.xml>

<http://www.spec.org/cpu2006/flags/Dell-Platform-Settings-V1.2-revA.20120328.xml>

SPEC and SPECfp are registered trademarks of the Standard Performance Evaluation Corporation. All other brand and product names appearing in this result are trademarks or registered trademarks of their respective holders.

For questions about this result, please contact the tester.
For other inquiries, please contact webmaster@spec.org.

Tested with SPEC CPU2006 v1.2.
Report generated on Thu Jul 24 02:27:15 2014 by SPEC CPU2006 PS/PDF formatter v6932.
Originally published on 27 March 2012.