



SPEC[®] CFP2006 Result

Copyright 2006-2014 Standard Performance Evaluation Corporation

Bull SAS

SPECfp[®]2006 = 74.6

NovaScale R440 F3 (Intel Xeon E5-2640, 2.50 GHz)

SPECfp_base2006 = 70.9

CPU2006 license: 20

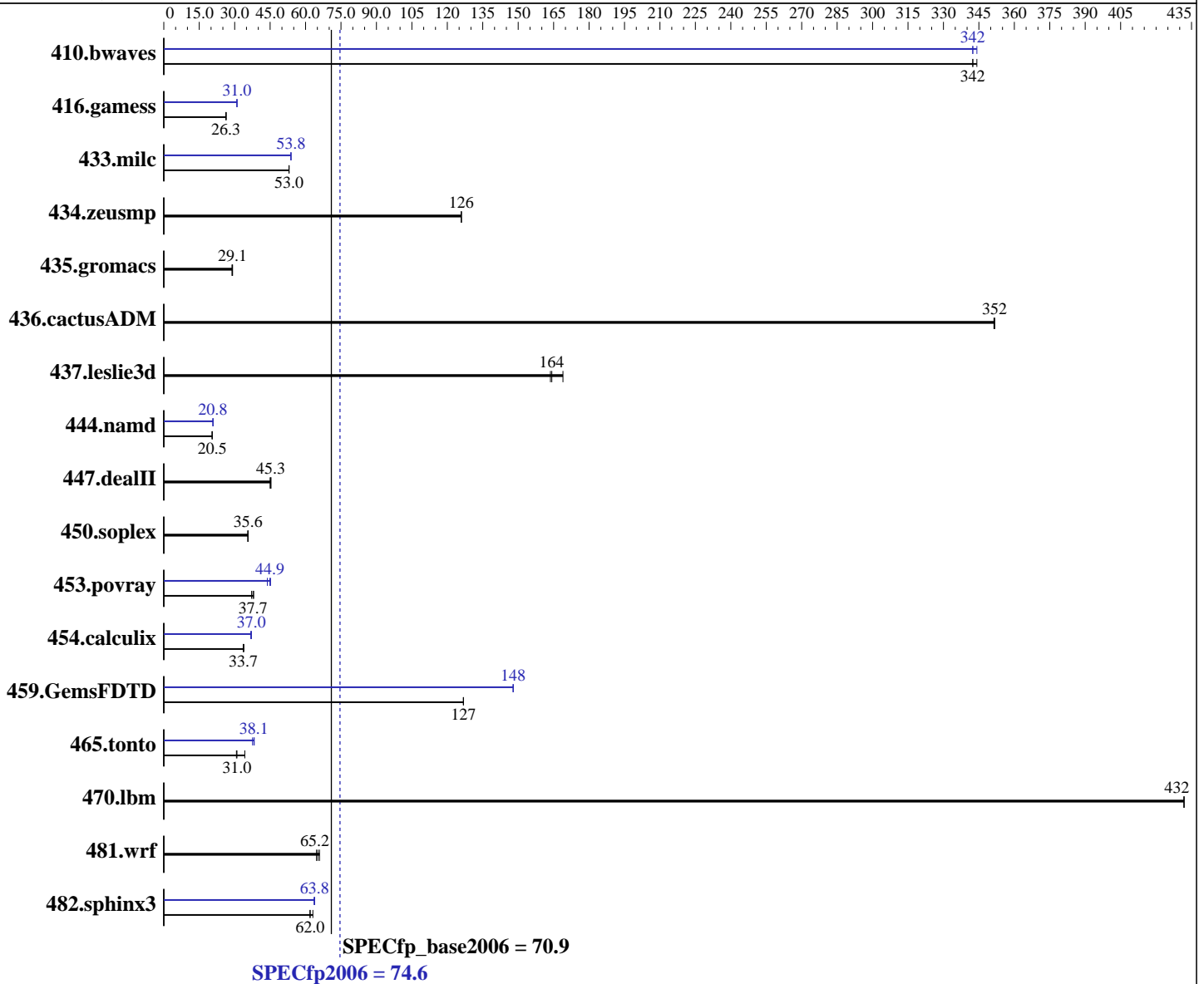
Test date: Mar-2012

Test sponsor: Bull SAS

Hardware Availability: Mar-2012

Tested by: Dell Inc.

Software Availability: Feb-2012



Hardware

CPU Name: Intel Xeon E5-2640
 CPU Characteristics: Intel Turbo Boost Technology up to 3.00 GHz
 CPU MHz: 2500
 FPU: Integrated
 CPU(s) enabled: 12 cores, 2 chips, 6 cores/chip, 2 threads/core
 CPU(s) orderable: 1,2 chip
 Primary Cache: 32 KB I + 32 KB D on chip per core
 Secondary Cache: 256 KB I+D on chip per core

Continued on next page

Software

Operating System: SUSE Linux Enterprise Server 11 SP2 (x86_64) 3.0.13-0.19-default
 Compiler: C/C++: Version 12.1.0.225 of Intel C++ Studio XE for Linux;
 Fortran: Version 12.1.0.225 of Intel Fortran Studio XE for Linux
 Auto Parallel: Yes
 File System: ext3
 System State: Run level 3 (multi-user)

Continued on next page



SPEC CFP2006 Result

Copyright 2006-2014 Standard Performance Evaluation Corporation

Bull SAS

SPECfp2006 = 74.6

NovaScale R440 F3 (Intel Xeon E5-2640, 2.50 GHz)

SPECfp_base2006 = 70.9

CPU2006 license: 20

Test sponsor: Bull SAS

Tested by: Dell Inc.

Test date: Mar-2012

Hardware Availability: Mar-2012

Software Availability: Feb-2012

L3 Cache: 15 MB I+D on chip per chip
Other Cache: None
Memory: 128 GB (16 x 8 GB 2Rx4 PC3-12800R-11, ECC, running at 1333 MHz)
Disk Subsystem: 2 x 146 GB 15000 RPM SAS, RAID 0
Other Hardware: None

Base Pointers: 64-bit
Peak Pointers: 32/64-bit
Other Software: None

Results Table

Benchmark	Base						Peak					
	Seconds	Ratio	Seconds	Ratio	Seconds	Ratio	Seconds	Ratio	Seconds	Ratio	Seconds	Ratio
410.bwaves	39.7	342	39.7	342	39.5	344	39.5	344	39.7	342	39.7	342
416.gamess	741	26.4	744	26.3	745	26.3	633	31.0	632	31.0	632	31.0
433.milc	173	53.0	173	53.0	173	53.0	171	53.8	171	53.8	171	53.8
434.zeusmp	72.3	126	72.3	126	72.3	126	72.3	126	72.3	126	72.3	126
435.gromacs	248	28.8	245	29.1	246	29.1	248	28.8	245	29.1	246	29.1
436.cactusADM	34.0	352	34.0	351	34.0	352	34.0	352	34.0	351	34.0	352
437.leslie3d	57.2	164	55.6	169	57.4	164	57.2	164	55.6	169	57.4	164
444.namd	392	20.5	392	20.5	392	20.5	385	20.8	385	20.8	385	20.8
447.dealII	252	45.3	254	45.0	253	45.3	252	45.3	254	45.0	253	45.3
450.soplex	234	35.6	234	35.6	234	35.6	234	35.6	234	35.6	234	35.6
453.povray	140	38.1	141	37.7	143	37.2	118	45.2	118	44.9	121	43.8
454.calculix	245	33.7	246	33.6	243	33.9	223	37.1	224	36.8	223	37.0
459.GemsFDTD	83.7	127	83.7	127	83.7	127	71.7	148	71.7	148	71.7	148
465.tonto	320	30.7	287	34.3	318	31.0	258	38.1	262	37.5	257	38.3
470.lbm	31.8	432	31.8	432	31.8	432	31.8	432	31.8	432	31.8	432
481.wrf	169	65.9	173	64.6	171	65.2	169	65.9	173	64.6	171	65.2
482.sphinx3	314	62.0	309	63.1	315	61.9	307	63.6	305	63.8	305	63.8

Results appear in the order in which they were run. Bold underlined text indicates a median measurement.

Operating System Notes

Stack size set to unlimited using "ulimit -s unlimited"

Platform Notes

System Profile set to Custom
CPU Power Management set to Maximum Performance
Memory Frequency set to Maximum Performance
Turbo Boost set to Enabled
C States/C1E set to Enabled
Sysinfo program /root/CPU2006-1.2/config/sysinfo.rev6800
\$Rev: 6800 \$ \$Date:: 2011-10-11 #\$ 6f2ebdff5032aaa42e583f96b07f99d3
running on unsvr Tue Mar 6 16:18:28 2012

Continued on next page



SPEC CFP2006 Result

Copyright 2006-2014 Standard Performance Evaluation Corporation

Bull SAS

SPECfp2006 = 74.6

NovaScale R440 F3 (Intel Xeon E5-2640, 2.50 GHz)

SPECfp_base2006 = 70.9

CPU2006 license: 20

Test sponsor: Bull SAS

Tested by: Dell Inc.

Test date: Mar-2012

Hardware Availability: Mar-2012

Software Availability: Feb-2012

Platform Notes (Continued)

This section contains SUT (System Under Test) info as seen by some common utilities. To remove or add to this section, see: <http://www.spec.org/cpu2006/Docs/config.html#sysinfo>

```

From /proc/cpuinfo
model name      : Intel(R) Xeon(R) CPU E5-2640 0 @ 2.50GHz
 2 "physical id"s (chips)
 24 "processors"
cores, siblings (Caution: counting these is hw and system dependent. The
following excerpts from /proc/cpuinfo might not be reliable. Use with
caution.)
  cpu cores    : 6
  siblings    : 12
  physical 0: cores 0 1 2 3 4 5
  physical 1: cores 0 1 2 3 4 5
cache size    : 15360 KB

```

```

From /proc/meminfo
MemTotal:      132089860 kB
HugePages_Total: 0
Hugepagesize:  2048 kB

```

```

/usr/bin/lsb_release -d
SUSE Linux Enterprise Server 11 (x86_64)

```

```

From /etc/*release* /etc/*version*
SuSE-release:
SUSE Linux Enterprise Server 11 (x86_64)
VERSION = 11
PATCHLEVEL = 2

```

```

uname -a:
Linux unsvr 3.0.13-0.19-default #1 SMP Fri Feb 3 15:38:23 UTC 2012 (7f256ae)
x86_64 x86_64 x86_64 GNU/Linux

```

run-level 3 Mar 6 09:31 last=S

```

SPEC is set to: /root/CPU2006-1.2
Filesystem      Type  Size  Used Avail Use% Mounted on
/dev/sdal       ext3  265G   68G  184G  27% /

```

Additional information from dmidecode:

(End of data from sysinfo program)

General Notes

Environment variables set by runspec before the start of the run:

```

KMP_AFFINITY = "granularity=fine,scatter"
LD_LIBRARY_PATH = "/root/CPU2006-1.2/libs/32:/root/CPU2006-1.2/libs/64"
OMP_NUM_THREADS = "12"

```

Continued on next page



SPEC CFP2006 Result

Copyright 2006-2014 Standard Performance Evaluation Corporation

Bull SAS

SPECfp2006 = 74.6

NovaScale R440 F3 (Intel Xeon E5-2640, 2.50 GHz)

SPECfp_base2006 = 70.9

CPU2006 license: 20

Test date: Mar-2012

Test sponsor: Bull SAS

Hardware Availability: Mar-2012

Tested by: Dell Inc.

Software Availability: Feb-2012

General Notes (Continued)

The Dell PowerEdge R620 and the Bull NovaScale R440 F3 models are electronically equivalent. The results have been measured on a Dell PowerEdge R620 model

Transparent Huge Pages disabled with:

```
echo never > /sys/kernel/mm/transparent_hugepage/enabled
```

Filesystem page cache cleared with:

```
echo 1> /proc/sys/vm/drop_caches
```

Binaries compiled on a system with 1x Core i7-860 CPU + 8GB memory using RHEL5.5

Base Compiler Invocation

C benchmarks:

```
icc -m64
```

C++ benchmarks:

```
icpc -m64
```

Fortran benchmarks:

```
ifort -m64
```

Benchmarks using both Fortran and C:

```
icc -m64 ifort -m64
```

Base Portability Flags

```

410.bwaves: -DSPEC_CPU_LP64
416.gamess: -DSPEC_CPU_LP64
433.milc: -DSPEC_CPU_LP64
434.zeusmp: -DSPEC_CPU_LP64
435.gromacs: -DSPEC_CPU_LP64 -nofor_main
436.cactusADM: -DSPEC_CPU_LP64 -nofor_main
437.leslie3d: -DSPEC_CPU_LP64
444.namd: -DSPEC_CPU_LP64
447.dealII: -DSPEC_CPU_LP64
450.soplex: -DSPEC_CPU_LP64
453.povray: -DSPEC_CPU_LP64
454.calculix: -DSPEC_CPU_LP64 -nofor_main
459.GemsFDTD: -DSPEC_CPU_LP64
465.tonto: -DSPEC_CPU_LP64
470.lbm: -DSPEC_CPU_LP64
481.wrf: -DSPEC_CPU_LP64 -DSPEC_CPU_CASE_FLAG -DSPEC_CPU_LINUX
482.sphinx3: -DSPEC_CPU_LP64

```



SPEC CFP2006 Result

Copyright 2006-2014 Standard Performance Evaluation Corporation

Bull SAS

SPECfp2006 = 74.6

NovaScale R440 F3 (Intel Xeon E5-2640, 2.50 GHz)

SPECfp_base2006 = 70.9

CPU2006 license: 20
Test sponsor: Bull SAS
Tested by: Dell Inc.

Test date: Mar-2012
Hardware Availability: Mar-2012
Software Availability: Feb-2012

Base Optimization Flags

C benchmarks:
-xAVX -ipo -O3 -no-prec-div -static -parallel -opt-prefetch
-ansi-alias

C++ benchmarks:
-xAVX -ipo -O3 -no-prec-div -static -opt-prefetch -ansi-alias

Fortran benchmarks:
-xAVX -ipo -O3 -no-prec-div -static -parallel -opt-prefetch

Benchmarks using both Fortran and C:
-xAVX -ipo -O3 -no-prec-div -static -parallel -opt-prefetch
-ansi-alias

Peak Compiler Invocation

C benchmarks:
icc -m64

C++ benchmarks:
icpc -m64

Fortran benchmarks:
ifort -m64

Benchmarks using both Fortran and C:
icc -m64 ifort -m64

Peak Portability Flags

Same as Base Portability Flags

Peak Optimization Flags

C benchmarks:

433.milc: -xAVX(pass 2) -prof-gen(pass 1) -ipo(pass 2) -O3(pass 2)
-no-prec-div(pass 2) -prof-use(pass 2) -static -auto-ilp32
-ansi-alias

470.lbm: basepeak = yes

482.sphinx3: -xAVX -ipo -O3 -no-prec-div -unroll2 -ansi-alias
-parallel

Continued on next page



SPEC CFP2006 Result

Copyright 2006-2014 Standard Performance Evaluation Corporation

Bull SAS

SPECfp2006 = 74.6

NovaScale R440 F3 (Intel Xeon E5-2640, 2.50 GHz)

SPECfp_base2006 = 70.9

CPU2006 license: 20

Test date: Mar-2012

Test sponsor: Bull SAS

Hardware Availability: Mar-2012

Tested by: Dell Inc.

Software Availability: Feb-2012

Peak Optimization Flags (Continued)

C++ benchmarks:

444.namd: -xAVX(pass 2) -prof-gen(pass 1) -ipo(pass 2) -O3(pass 2)
-no-prec-div(pass 2) -prof-use(pass 2) -fno-alias
-auto-ilp32

447.dealII: basepeak = yes

450.soplex: basepeak = yes

453.povray: -xAVX(pass 2) -prof-gen(pass 1) -ipo(pass 2) -O3(pass 2)
-no-prec-div(pass 2) -prof-use(pass 2) -unroll4 -ansi-alias

Fortran benchmarks:

410.bwaves: -xAVX -ipo -O3 -no-prec-div -opt-prefetch -parallel
-static

416.gamess: -xAVX(pass 2) -prof-gen(pass 1) -ipo(pass 2) -O3(pass 2)
-no-prec-div(pass 2) -prof-use(pass 2) -unroll2
-inline-level=0 -scalar-rep- -static

434.zeusmp: basepeak = yes

437.leslie3d: basepeak = yes

459.GemsFDTD: -xAVX(pass 2) -prof-gen(pass 1) -ipo(pass 2) -O3(pass 2)
-no-prec-div(pass 2) -prof-use(pass 2) -unroll2
-inline-level=0 -opt-prefetch -parallel

465.tonto: -xAVX(pass 2) -prof-gen(pass 1) -ipo(pass 2) -O3(pass 2)
-no-prec-div(pass 2) -prof-use(pass 2) -inline-calloc
-opt-malloc-options=3 -auto -unroll4

Benchmarks using both Fortran and C:

435.gromacs: basepeak = yes

436.cactusADM: basepeak = yes

454.calculix: -xAVX -ipo -O3 -no-prec-div -auto-ilp32 -ansi-alias

481.wrf: basepeak = yes

The flags files that were used to format this result can be browsed at

<http://www.spec.org/cpu2006/flags/Intel-ic12.1-official-linux64.20111122.html>

<http://www.spec.org/cpu2006/flags/Dell-Platform-Settings-V1.2-revA.20120328.html>



SPEC CFP2006 Result

Copyright 2006-2014 Standard Performance Evaluation Corporation

Bull SAS

SPECfp2006 = 74.6

NovaScale R440 F3 (Intel Xeon E5-2640, 2.50 GHz)

SPECfp_base2006 = 70.9

CPU2006 license: 20

Test sponsor: Bull SAS

Tested by: Dell Inc.

Test date: Mar-2012

Hardware Availability: Mar-2012

Software Availability: Feb-2012

You can also download the XML flags sources by saving the following links:

<http://www.spec.org/cpu2006/flags/Intel-ic12.1-official-linux64.20111122.xml>

<http://www.spec.org/cpu2006/flags/Dell-Platform-Settings-V1.2-revA.20120328.xml>

SPEC and SPECfp are registered trademarks of the Standard Performance Evaluation Corporation. All other brand and product names appearing in this result are trademarks or registered trademarks of their respective holders.

For questions about this result, please contact the tester.
For other inquiries, please contact webmaster@spec.org.

Tested with SPEC CPU2006 v1.2.
Report generated on Thu Jul 24 02:17:01 2014 by SPEC CPU2006 PS/PDF formatter v6932.
Originally published on 27 March 2012.